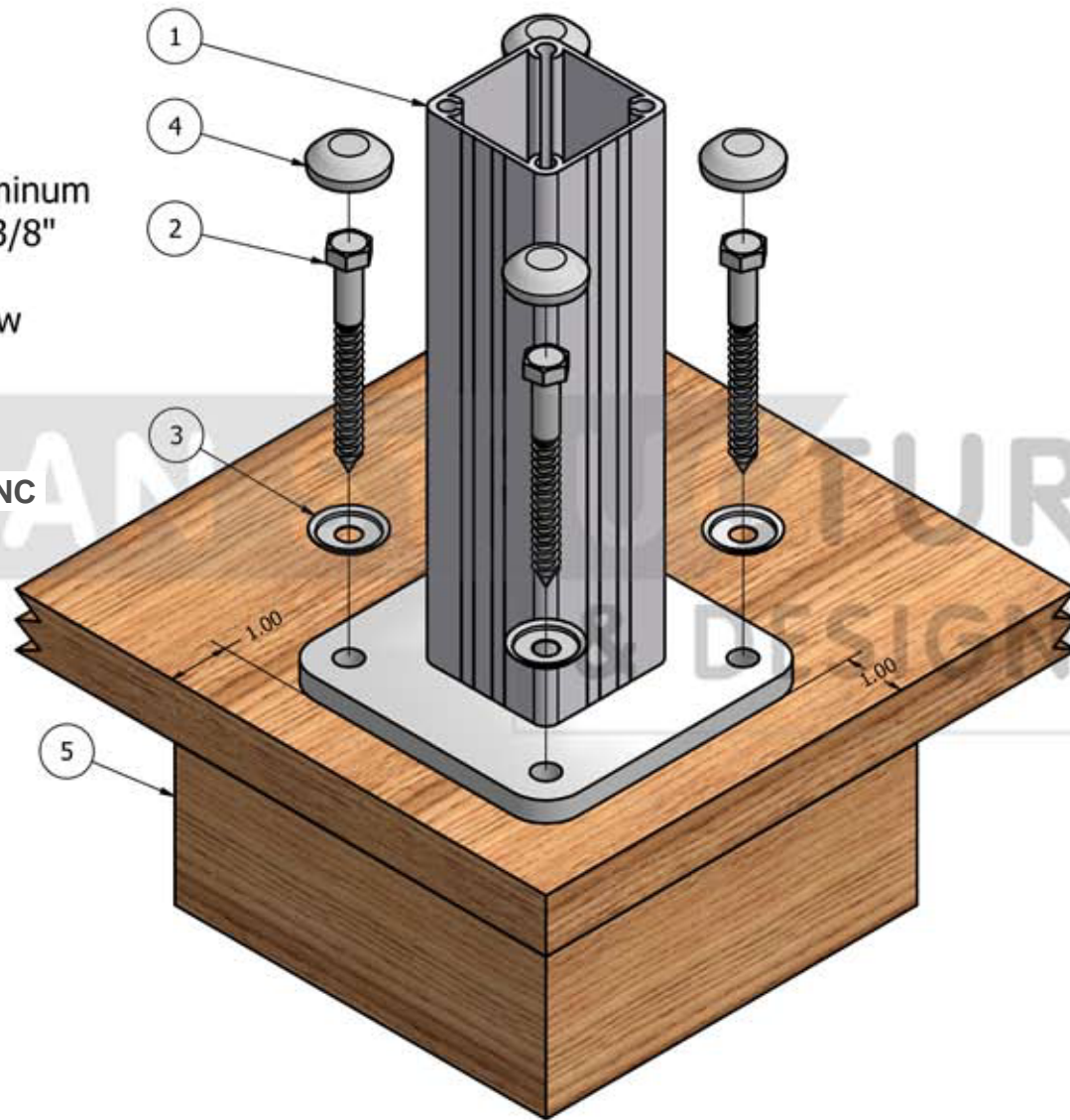


- 1 2-3/8" x 2-3/8" Aluminum Post with 5" x 5" x 3/8" Base Plate
- 2 Ø3/8" x 5" Lag Screw (Min. 3.5" Embed)
- 3 Washer - Bolt Head
- 4 Nylon Bolt Cap RA-NC
- 5 Blocking



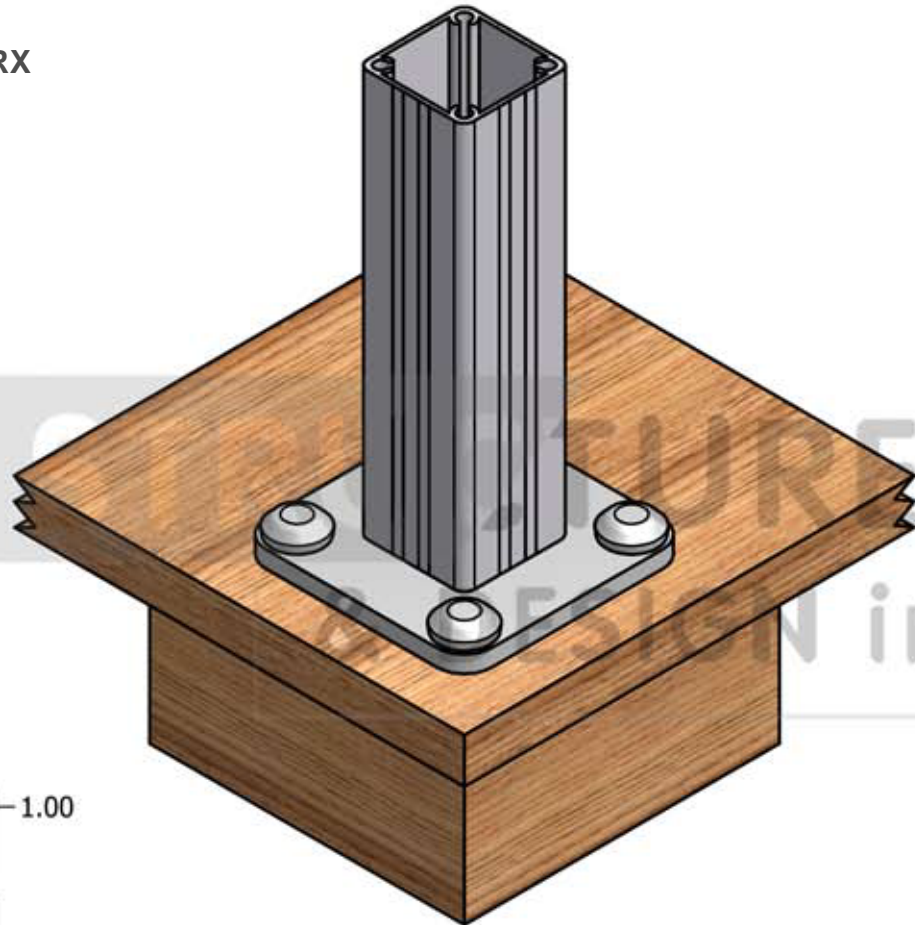
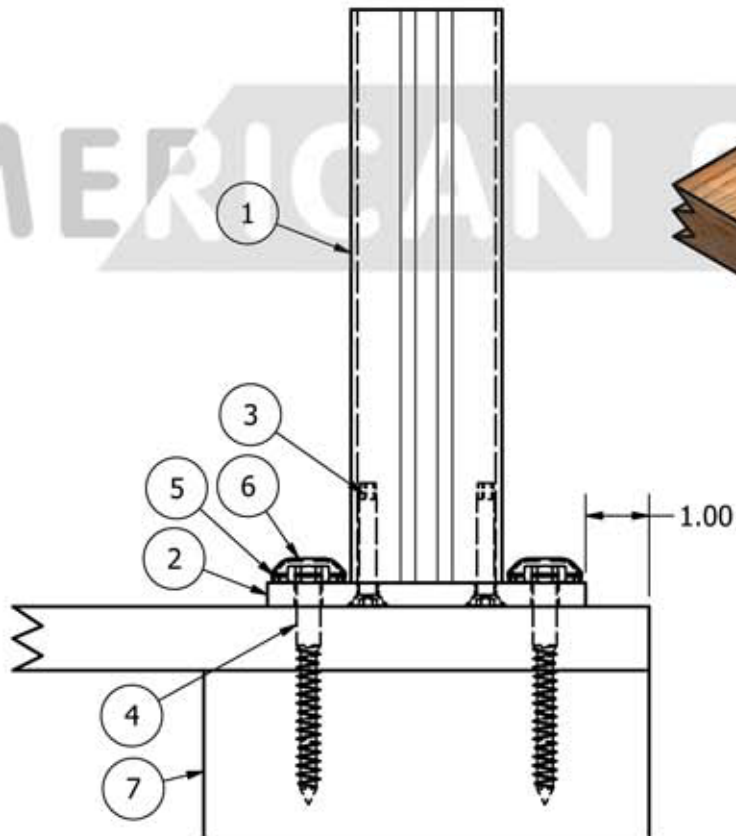
AMERICAN STRUCTURES & DESIGN INC.
1801 132ND AVE E STE 100, SUMNER, WA 98390
PHONE: 253-833-4343 FAX # 253-833-4545
<http://americanstructures.com>

CLIENT NAME:	DRAWN BY:	REV NO.	DATE:	ISSUED BY:	
JOB NAME:	DATE:	1	06-16-2022	P.S.	
ALUMINUM RAIL MOUNTING DETAIL	CHECKED BY: W.G.	2			
BID ITEM:	APPROVED BY:	3			
	SCALE:	4			

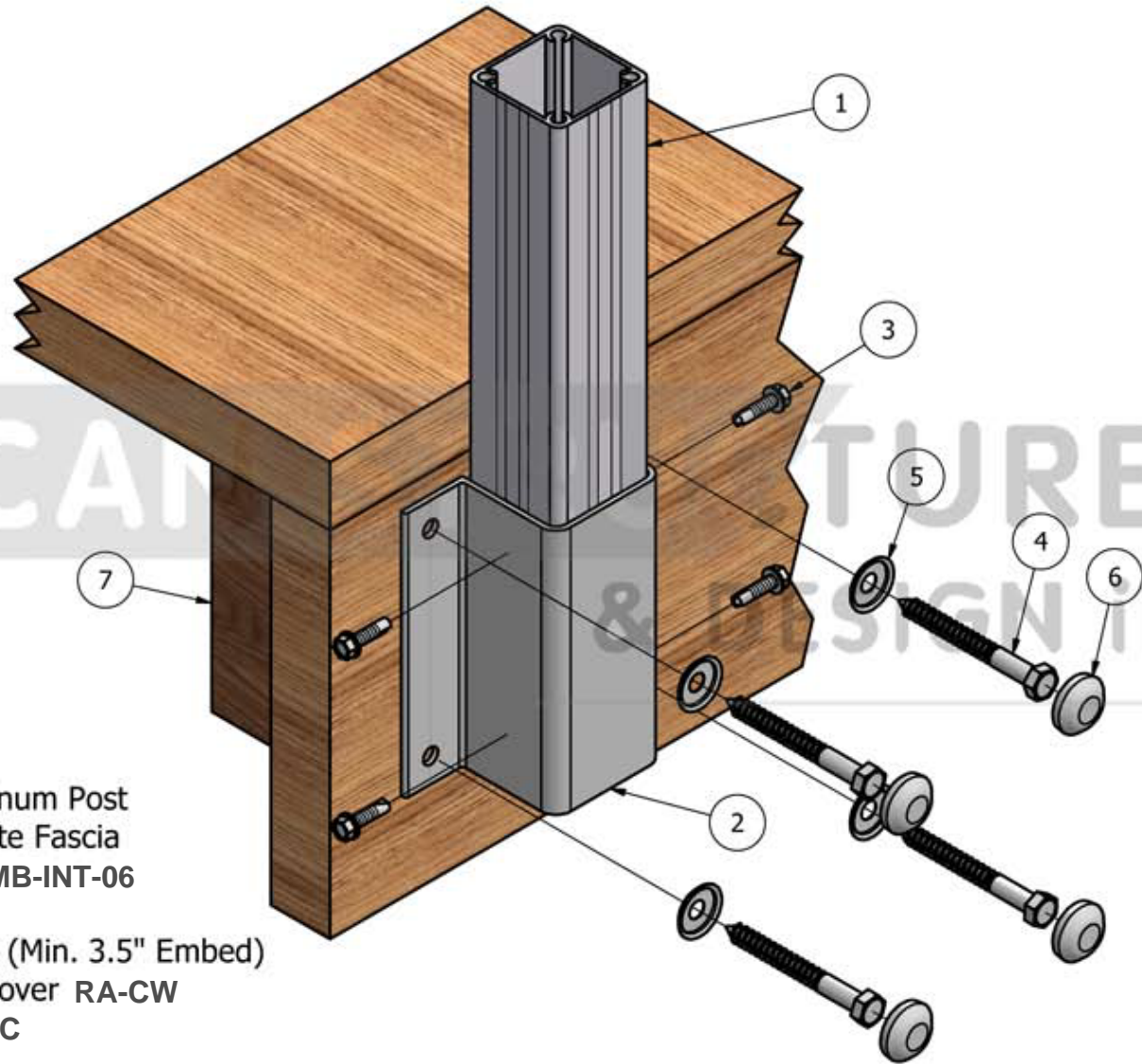
PAGE
NUMBER

1

- 1 2-3/8" x 2-3/8" Aluminum Post
- 2 5" x 5" x 3/8" Base Plate
- 3 Base Plate Screw FS-5/16-18X2.00FLATTORX
- 4 Ø3/8" x 5" Lag Screw (Min. 3.5" Embed)
- 5 Washer - Bolt Head Cover RA-CW
- 6 Nylon Bolt Cap RA-NC
- 7 Blocking

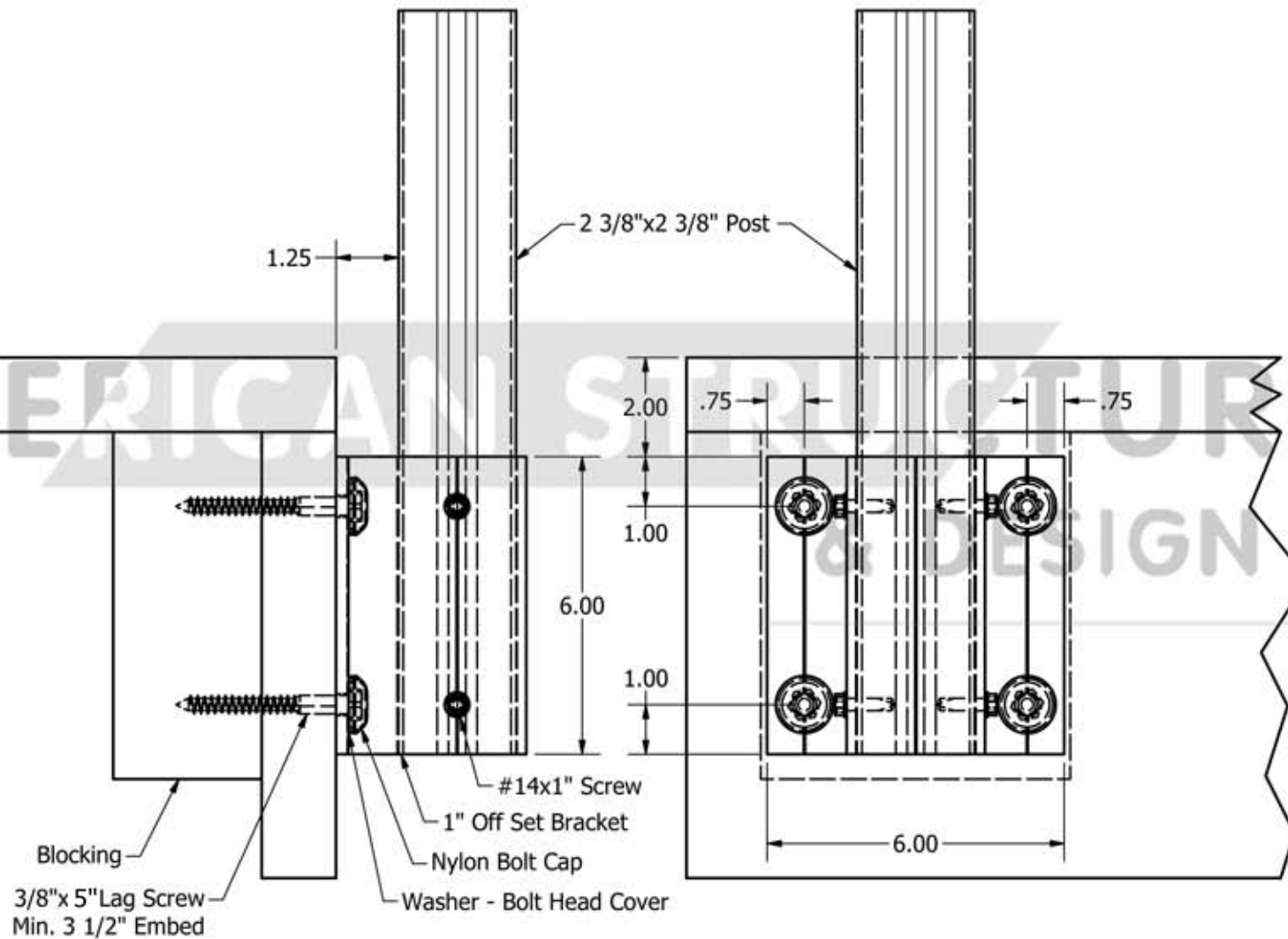


CLIENT NAME:	DRAWN BY:	REV NO.	DATE:	ISSUED BY:	
JOB NAME:	DATE:	1	06-16-2022	P.S.	
ALUMINUM RAIL MOUNTING DETAIL	CHECKED BY:	2			
BID ITEM:	APPROVED BY:	3			
	SCALE:	4			



- 1 2-3/8" x 2-3/8" Aluminum Post
- 2 1" Off Set Intermediate Fascia Mount Bracket RA-FMB-INT-06
- 3 #14 x 1" Screw
- 4 Ø3/8" x 5" Lag Screw (Min. 3.5" Embed)
- 5 Washer - Bolt Head Cover RA-CW
- 6 Nylon Bolt Cap RA-NC
- 7 Blocking

CLIENT NAME:	DRAWN BY:	REV NO.	DATE:	ISSUED BY:	
JOB NAME:	DATE:	1	06-16-2022	P.S.	
ALUMINUM RAIL MOUNTING DETAIL	CHECKED BY: W.G.	2			
BID ITEM:	APPROVED BY:	3			
	SCALE:	4			



AMERICAN STRUCTURES & DESIGN
AMERICAN STRUCTURES & DESIGN INC.
1801 132ND AVE E STE 100, SUMNER, WA 98390
PHONE: 253-833-4343 FAX # 253-833-4545
<http://americanstructures.com>

CLIENT NAME:	DRAWN BY:	REV NO.	DATE:	ISSUED BY:	
JOB NAME:	DATE:	1	06-16-2022	P.S.	
ALUMINUM RAIL MOUNTING DETAIL	CHECKED BY: W.G.	2			
BID ITEM:	APPROVED BY:	3			
	SCALE:	4			

PAGE
NUMBER

4