

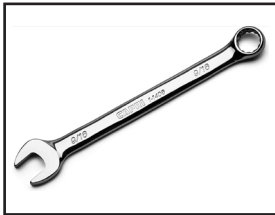
SUNSHADE BRACKET INSTALLATION INSTRUCTIONS

Important Note:

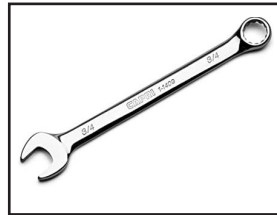
Every sunshade (both standard and non-standard) has a **site-specific submittal package** for material and installation instruction details. The site-submittal package **MUST** be used to guide all installation steps. If you have further questions, contact your AS&D project manager.

Note: Some larger, or non-standard, sunshades require different hardware and installation methods. Refer to the AS&D submittal package for instructions.

Recommended Tools



1. 9/16" Wrench



2. 3/4" Wrench



3. Impact Gun



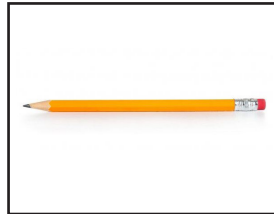
4. 9/16" Socket



5. 3/4" Socket



6. Tape Measure

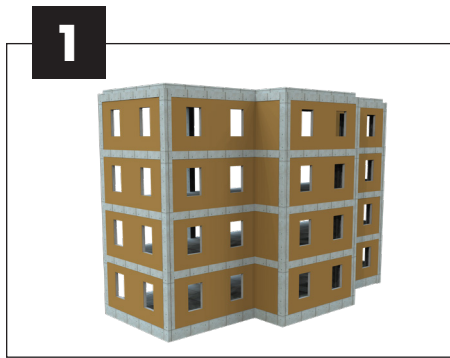


7. Pencil



8. Drill with 1/4" bit

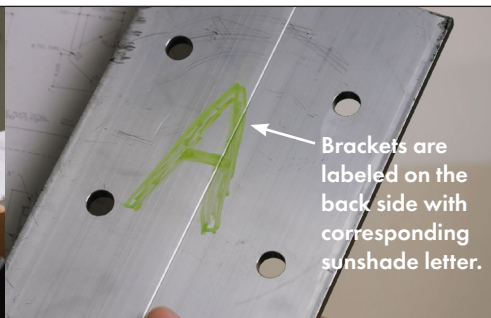
Bracket Mount Preparation



Brackets must be installed to structural framing members or per approved engineering details. Brackets must be installed prior to waterproofing and siding.



Verify that all components have been received and that brackets are the correct size based on the AS&D submittal package.



Sort and separate brackets to match corresponding submittal. Brackets are labeled on the back side with corresponding sunshade letter. Check submittals to make sure each bracket matches the sunshade.

Important Note: Brackets are specifically designed for your job and for **each individual sunshade**. Brackets are manufactured based on siding thickness and their placement on the building. **Before installation verify siding thickness matches the submittal. If the measurement varies by more than 5/8"** contact your AS&D project manager.



If your sunshade does not have sag rods proceed to step 5. Sort and place the supplied hex bolts, nuts, and lock washers next to the **sag rod brackets**. Check submittals to verify the size requirements for hardware based on your sag rod bracket design.



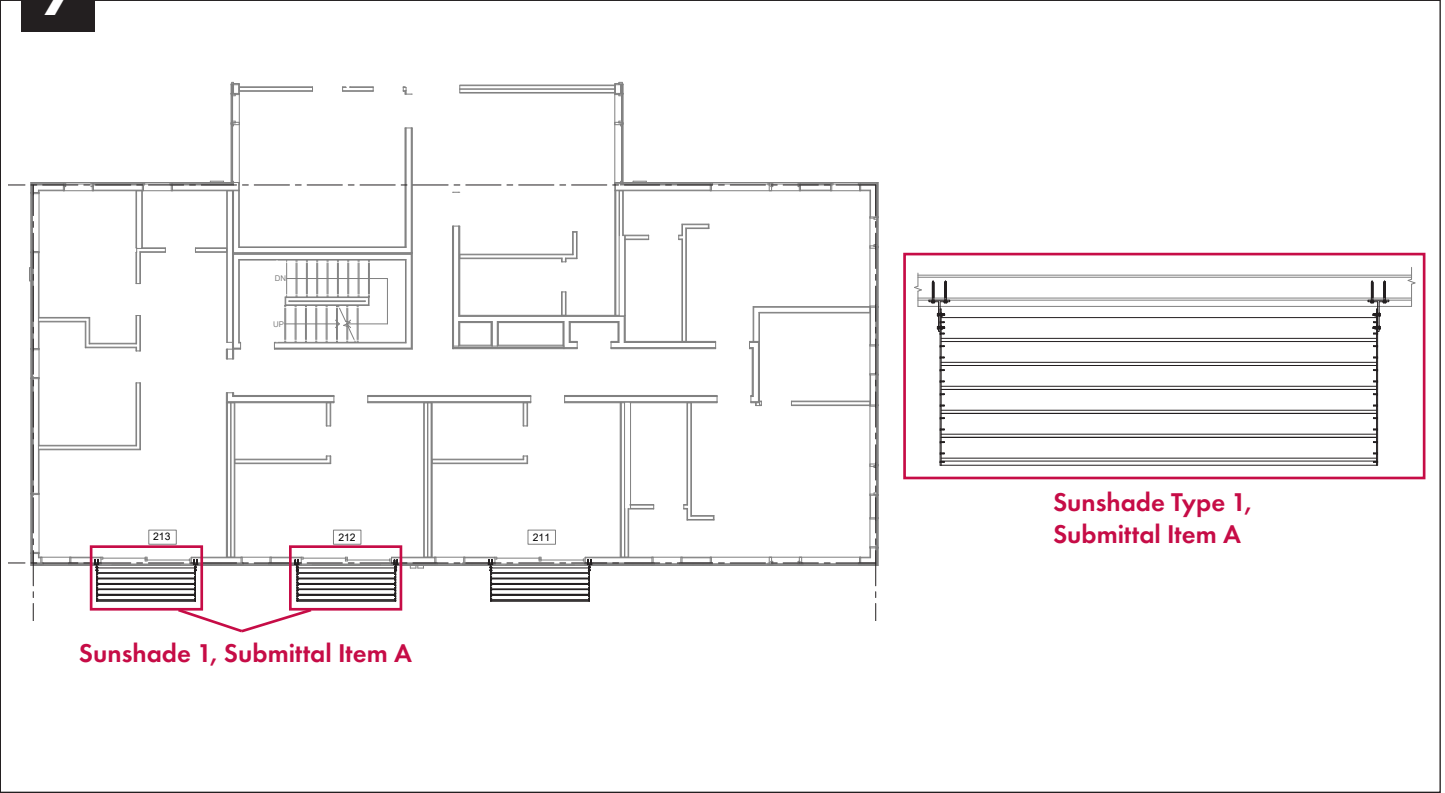
Sort and place supplied hex lags and lock washers next to the sub fascia brackets. Verify these components match the submittals as well.



Always verify bracket type and placement using the site-specific submittal package.

Installation

7



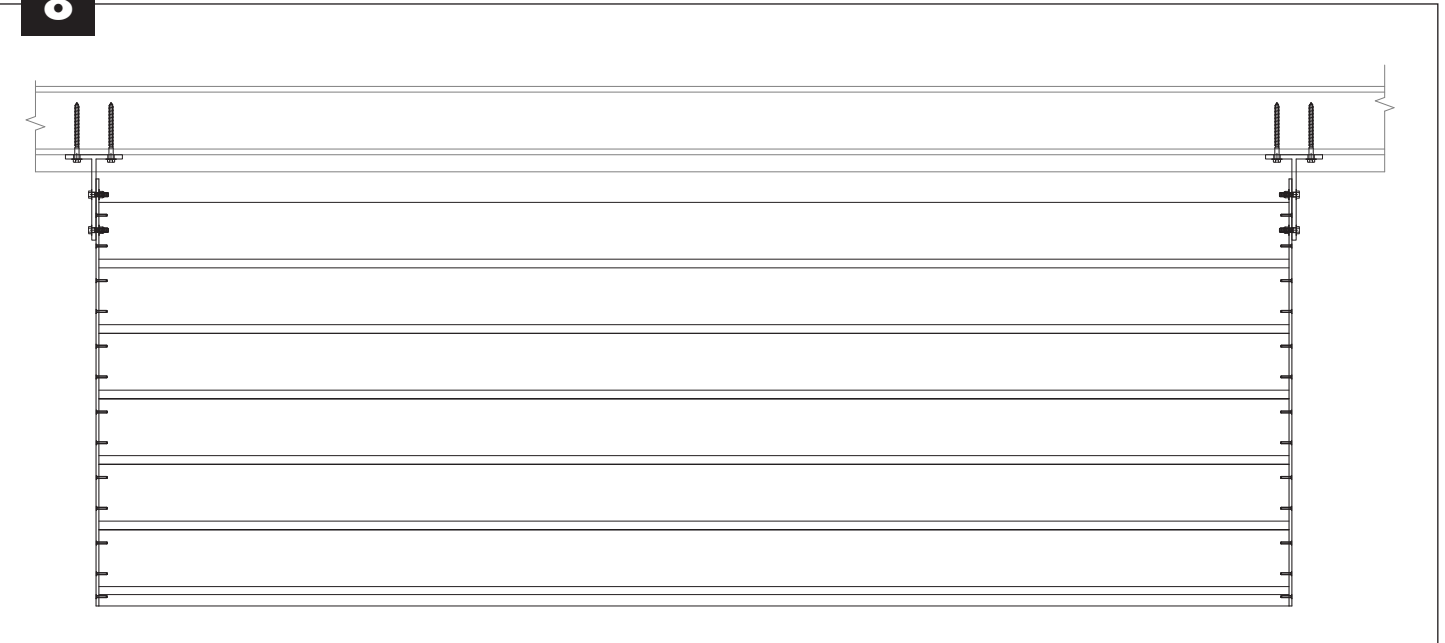
Sunshade 1, Submittal Item A

Sunshade Type 1, Submittal Item A

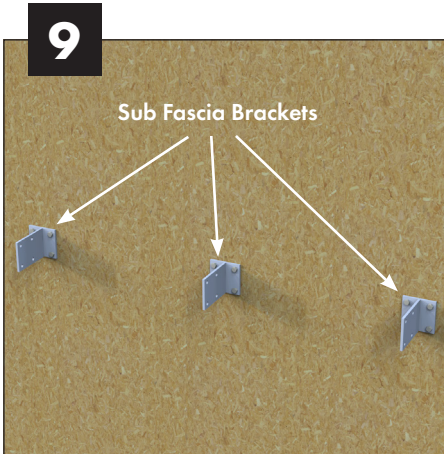
Confirm bracket locations using the site-specific submittal package before installation.

Note: Image above is for informational purposes only, always use your site-submittal package for reference.

8

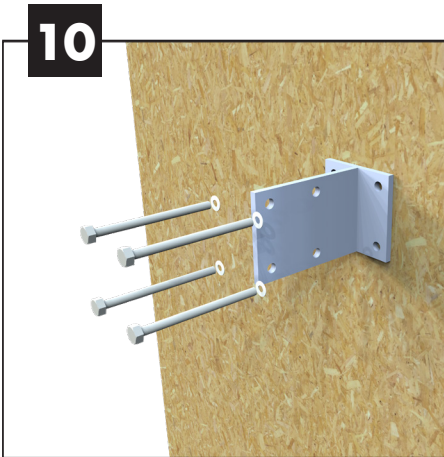


Locate bracket layout page in the site-specific submittal package. If you have multiple sizes of sunshades locate the corresponding layout for the sunshade you are installing.

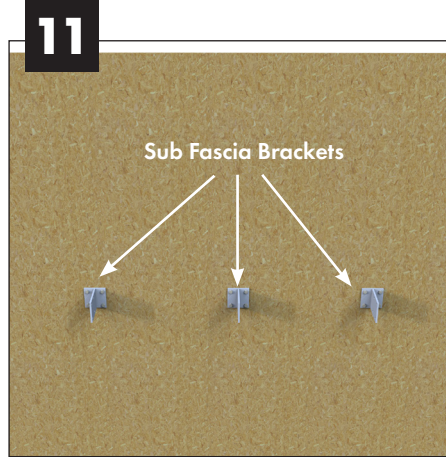


9. Set the height of your sunshade based on the location of your structural backing (example rim joist).

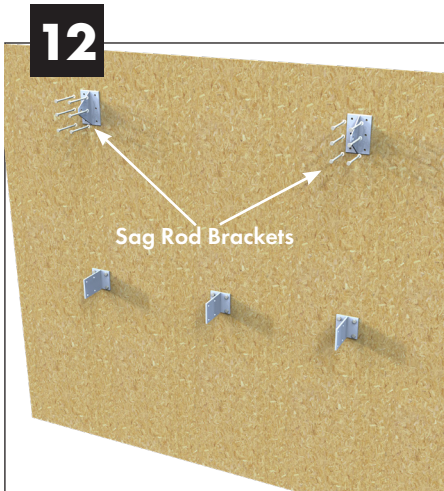
Installation



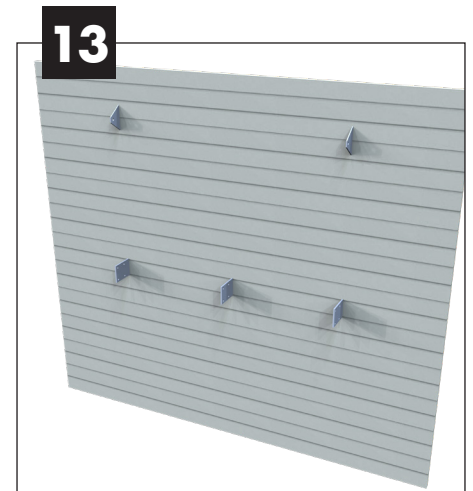
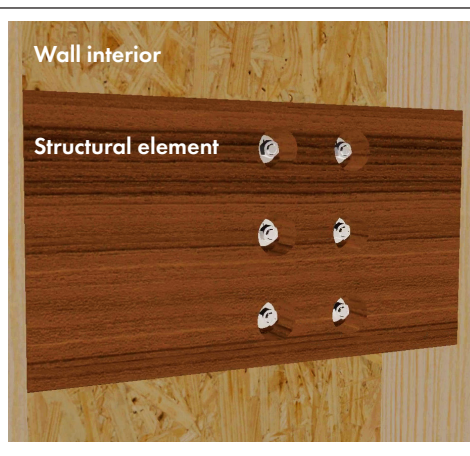
Install sub fascia brackets per submittal dimensions using the supplied hex lags.



Continue installing sub fascia brackets always referring to your submittal package.



If your sunshade has sag rods. Install sag rod brackets to the building using the supplied hardware called out in your submittal package. The submittal provides the exact dimensions where you will install the sag rod brackets. Ensure brackets are secured to a structural element as per local code jurisdiction



Ensure brackets have been installed correctly using the site-specific submittal packet. AFTER verification of correct installation, waterproofing and siding can be installed

Inspection Checklist for Bracket Installation

	Task	Notes
1.	Verify the brackets have been installed correctly according to the submittal packet.	
2.	Sub fascia brackets to wall.	
3.	Sag rod brackets to wall, if applicable	