



PATIO COVER OVERVIEW

Embrace Outdoor Living

PATIO COVER TYPES



Like shade? **Flat Pan** offers a sleek and refined aesthetic. Stay cool and comfortable while adding function, like ceiling fans or lighting, to your outdoor oasis.



Want lots of light? **PolyPanel** creates an elegant "skylight" effect, while keeping out weather and harmful UV rays.



Discover the ideal balance between practicality and affordability with a **V-Pan Patio Cover**. Whether you seek a relaxing sanctuary or inviting entertainment area V-Pan has got you covered.



Insulated Patio Covers, available in three EPS foam thicknesses, will shield you from the heat of sun and in colder temperatures inhibits heat from escaping.



Want both? Mix and match **PolyPanel** with either **Flat Pan** or **V-Pan** for the best of both worlds.



A **freestanding Lattice Pergola** offers a stunning accent to your outdoor living area and reduces direct sunlight exposure up to 60 percent.

LATTICE OVERVIEW



SIMPLE AND CLEAN

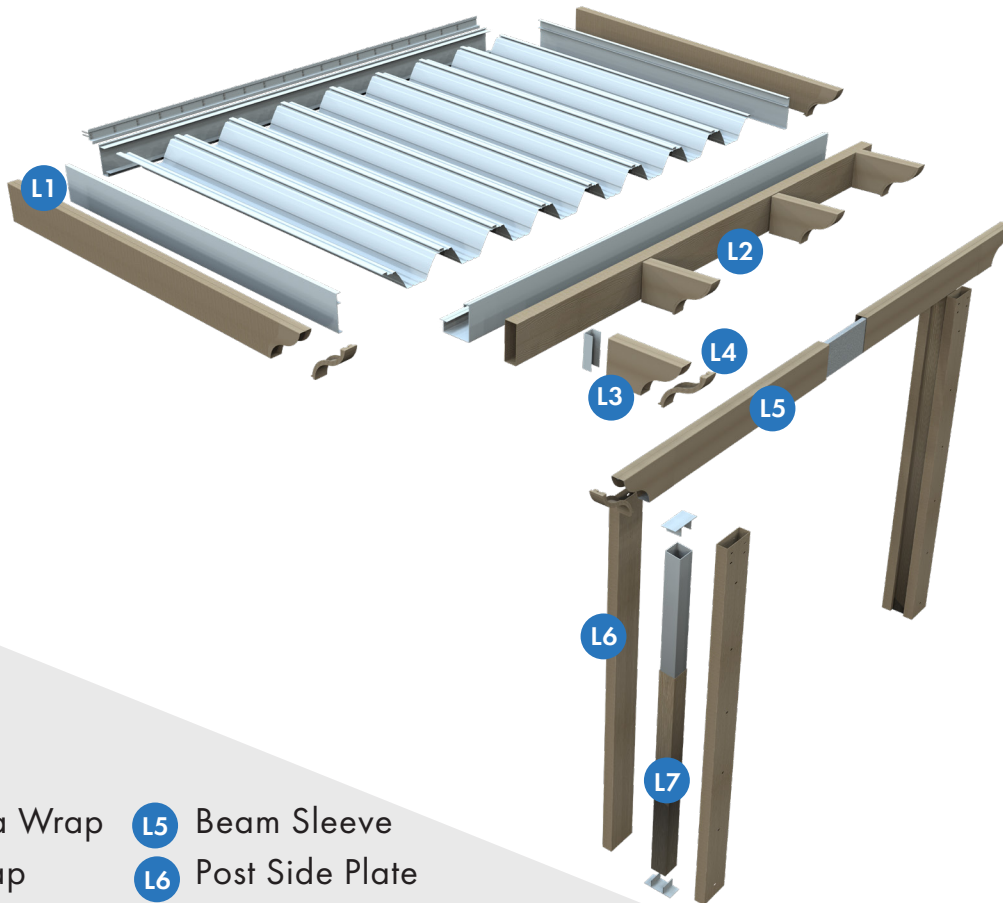
Each patio cover is designed to suit your taste and design vision. Standard white panels and posts offer a clean and sleek look.



WRAP FOR COLOR

Dress up your patio cover by wrapping the standard white framework and adding accents (rafters and end caps). Mix and match the ten colors, including black, to create a distinctive design.

LATTICE WRAP COMPONENTS



KEY:

- L1 Side Fascia Wrap
- L2 Gutter Wrap
- L3 Rafter Tail
- L4 End Cap
- L5 Beam Sleeve
- L6 Post Side Plate
- L7 Post Sleeve

MEET YOUR PATIO COVER

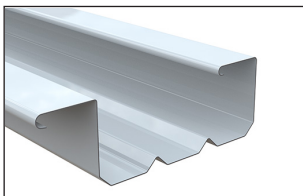
Patio covers offer a host of design options. Getting to know the basic layout and component vocabulary can help you make choices together with your local representative.

SUPPORT FRAMEWORK

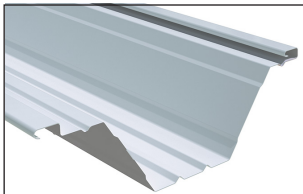
- S1** Hanger and Rail
- S2** I-Beam
- S3** Gutter
- S4** Post

PANEL TYPES

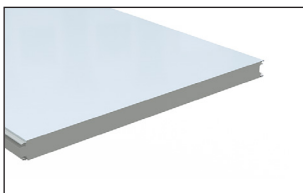
Flat Pan



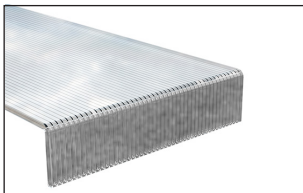
V-Pan



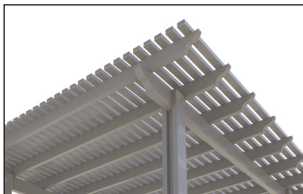
Insulated



P1 PolyPanel*



Pergola



* Pictured

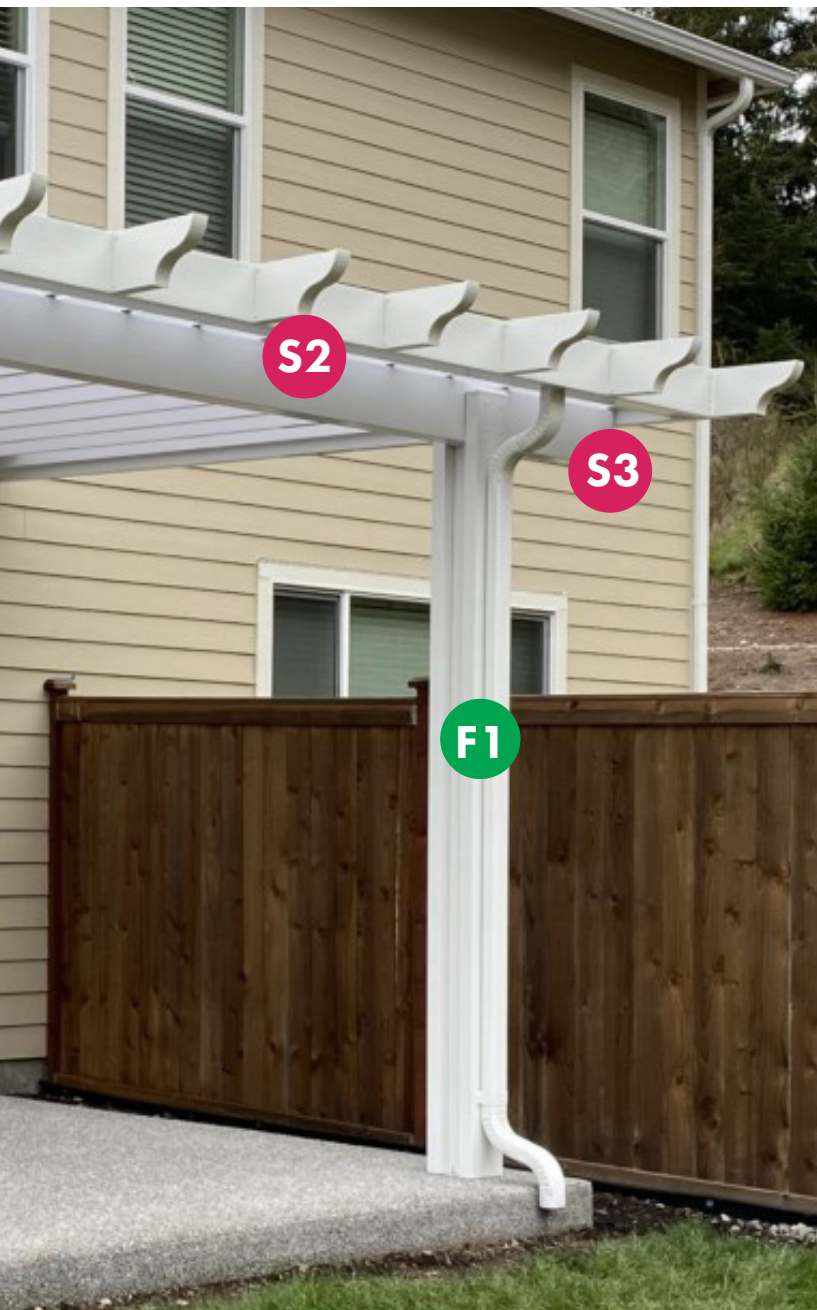
Roof Panel and Optional Lattice



	Beechwood	Driftwood	Maplewood	Pewter	Rosewood	Sandalwood	Siennawood
V-Pan							
Flat Pan	<input type="radio"/>	<input type="radio"/>	<input type="radio"/>	<input type="radio"/>	<input type="radio"/>	<input type="radio"/>	<input type="radio"/>
Insulated	<input type="radio"/>	<input type="radio"/>	<input type="radio"/>			<input type="radio"/>	
PolyPanel							
Lattice Wrap	<input checked="" type="radio"/>	<input checked="" type="radio"/>	<input checked="" type="radio"/>	<input checked="" type="radio"/>	<input checked="" type="radio"/>	<input checked="" type="radio"/>	<input checked="" type="radio"/>

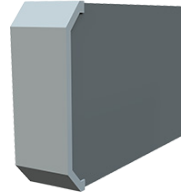
Standard colors

Special colors additional upcharges may apply

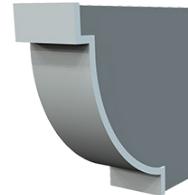


LATTICE WRAP END CAP OPTIONS:

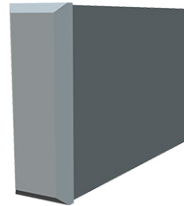
Miter



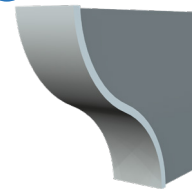
Corbel



Bevel



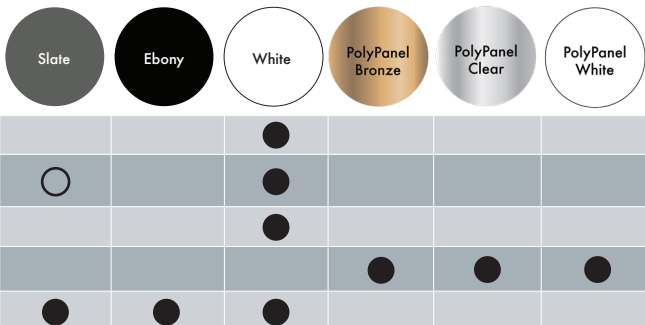
EC1 Scallop*



FUNCTIONAL

F1 Downspout, Elbow,
Dropout kit

Lattice Wrap Colors





PolyPanel, Lattice Wrap, Color: Slate



Flat Pan, Color: White



V-Pan, Lattice Wrap, Color: Driftwood



Flat Pan, Lattice Wrap, Color: White



PolyPanel, Lattice Wrap, Color: Siennawood



Flat Pan, Color: White



PolyPanel, Lattice Wrap, Color: White

View more inspiration at americanstructures.com. Ready to turn your patio into a stylish sanctuary? Contact Us or fill out our quote request form and we will get back to you, typically within one business day.

American Structures & Design - WA | 1801 132nd Ave. E | STE 100 | Sumner, WA 98390 | P: 253-833-4343 | F: 253-833-4545

American Structures & Design - OR | 13444 NE Jarrett St. | Portland, OR 97230 | P: 971-645-4201 | F: 971-645-4212

© American Structures & Design | 04/17/24 | americanstructures.com

ASDMAR_00005_r02_Patio_Cover_Overview