



# RAILING SYSTEM OVERVIEW

Modern Stylish Simplicity

# RAILING OVERVIEW

## OWNER AND HOMEOWNER BENEFITS

- Sleek and modern
- Durable
- Low maintenance
- Affordable
- Multiple infill options
- Various color choices



Commercial and residential applications

## BUILDER BENEFITS

- Lightweight
- Easy to install
- Lower labor costs
- Simplified installation
- Affordable



## ALUMINUM VS. TRADITIONAL STEEL

Ideal for both commercial and residential projects: aluminum is lightweight, strong, durable, and offers superior corrosion resistance. Virtually maintenance-free aluminum does not rust, rot, swell, or split, reducing cost of ownership.



**AS&D Aluminum Railing System**



**Traditional Steel**

# RAILING TYPES



Overlooking sprawling acreage this patio and deck are accented with Flat Top TR200 and Round Top TR100 Railing System and picket infill for style and safety.



Set against a wooded backdrop this deck was completed with Elliptical Top TR999 Railing System and paired with glass infill for optimal wind protection.



Stainless steel cable infill ensures safety and provides a seamless, unobstructed view, complementing the Flat Top TR200 railing on this backyard deck.



The Round Top TR100 railing effortlessly handled the intricacies of this multi-level deck, featuring numerous sets of stair runs.



Alexan 100, modern architectural apartments, installed low maintenance aluminium Flat Top TR200 railing on common outdoor spaces.

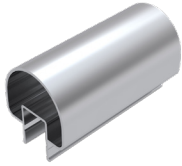


Providing strong protection and a dramatic design appeal, the Flat Top TR200 railing was paired with sleek cable infill secured by surface mount posts.

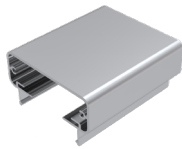
# MEET YOUR RAILING SYSTEM

Railing systems offer a host of design options. Getting to know the basic layout and component vocabulary can help you make choices together with your local representative.

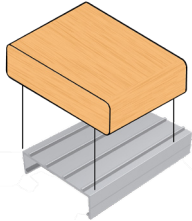
## A TOP RAIL STYLE



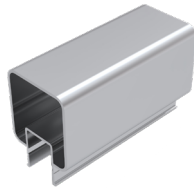
Round Top  
TR100



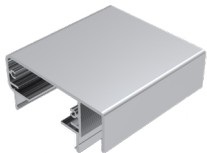
Flat Top\*  
TR200



Add-A-Top  
TR400



Square Top  
TR600



Flat Top  
TR800



Elliptical Top  
TR999

## B MOUNTING SUBSTRATE



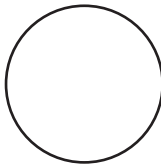
Wood



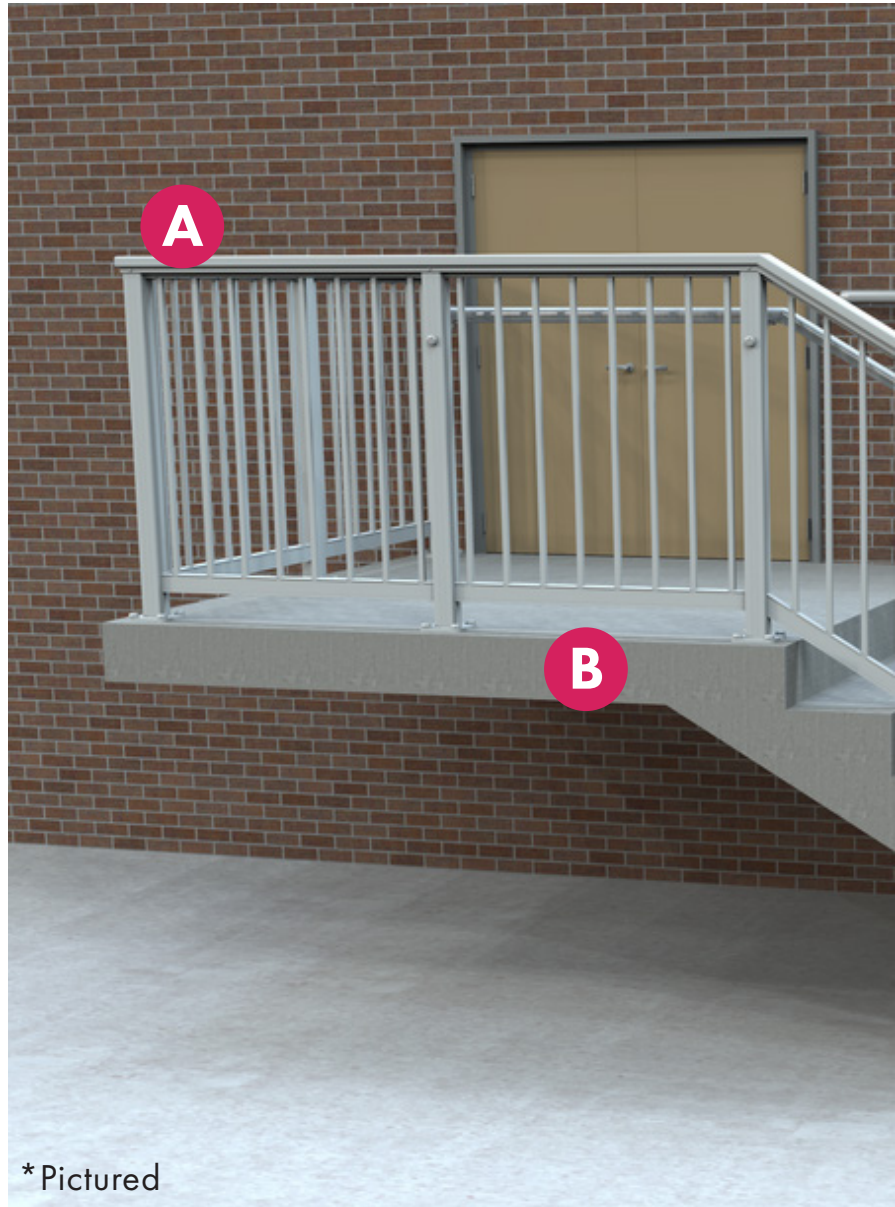
Concrete\*



Steel/  
Aluminum



Custom  
*Requires Prior  
Approval*



\* Pictured

## FINISH COLORS



Black



White



Brown



Anodized\*  
(Stock)  
*Additional Cost  
Applies*



Custom  
Powder  
Coating  
*Additional Cost  
Applies*



## C INFILL OPTIONS



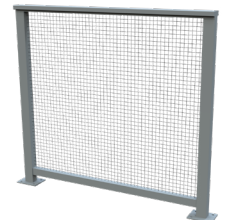
Glass



Picket\*



Cable



Perforated/  
Mesh



Midrail Design

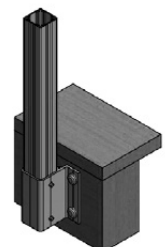


Horizontal Rail

## D MOUNTING STYLE



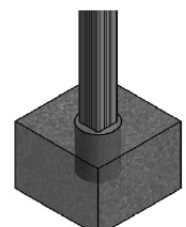
Surface Mount\*



Fascia Mount



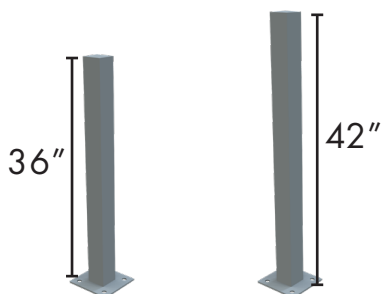
Flush Mount



Core Mount

## POST HEIGHT

Residential      Commercial\*





When you're seeking protection for a deck, American Structures and Design offers a wide array of railing choices to fit your needs. We provide high-quality railing materials to licensed contractors and businesses throughout the continental US and Canada.



**View more inspiration at [americanstructures.com](https://americanstructures.com). Ready to complete your deck?**

**Contact us or fill out our quote request form and we will get back to you, typically within one business day.**

American Structures & Design - WA | 1801 132nd Ave. E | STE 100 | Sumner, WA 98390 | P: 253-833-4343 | F: 253-833-4545

American Structures & Design - OR | 13444 NE Jarrett St. | Portland, OR 97230 | P: 971-645-4201 | F: 971-645-4212

© American Structures & Design | 06/20/24 | [americanstructures.com](https://americanstructures.com)

ASDMAR\_00007\_r02\_Railing\_Brochure