

# Adjust-A-Body® Tensioners

They all work the same,  
only the mounting ends are different.

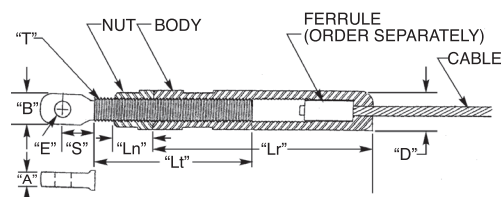


## Easy to install

The mounting end on each of our Adjust-A-Body® tensioners has a male thread that mates with the female thread within the body of the tensioner. The swaging ferrule is swaged onto the cable and holds the cable inside the body. The body rotates on the cable and provides a considerable amount of take-up during tensioning with an open-end wrench. After tensioning, the lock nut locks the assembly in place.

### Adjust-A-Body® with Threaded Eye Tensioner

Used on straight runs or stairs like the Adjust-A-Jaw® tensioners (see page 11), **these fittings cost a lot less than the Adjust-A-Jaw® tensioners.** You can use our Invisiware® fixed tabs or threaded tabs (page 28) or lag eyes (page 29), to mount this tensioner to your end posts. Or you can mount them using flat bar or angle iron welded to your post with holes drilled to accept the clevis. See the tabulated drawing and chart below to determine how this fitting interfaces with your end post.



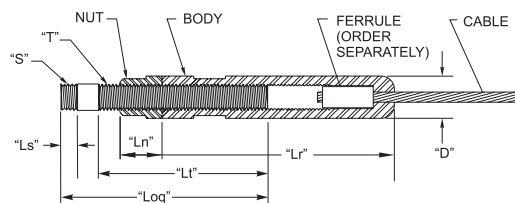
TYPE 316 STAINLESS STEEL

CABLE DIA.	PART NO.	*USE WITH FERRULE NO.	*USE WITH SCREW NO.	"E" THREAD	"A"	"B"	"S"	"T"	"Lt"	"Ln"	"Lr"	"D"
1/8"	A-JTE6	F-4	SC-6	1/4-28	.233"/.229"	.500"	.44"	5/16-24 L.H.	2.00"	.375"	2.75"	.500"
3/16"	A-JTE6	F-6	SC-6	1/4-28	.233"/.229"	.500"	.44"	5/16-24 L.H.	2.00"	.375"	2.75"	.500"
1/4"	A-JTE8	F-8	SC-8	3/8-24	.295"/.285"	.844"	.68"	7/16-20 L.H.	2.50"	.500"	3.00"	.625"

\*Order Ferrule and Screw Separately.

### Adjust-A-Body® with Threaded Bolt Tensioner

Used on straight runs, this tensioner screws into a drilled and tapped hole in your metal post. **Here is a real money-saver, because there is no need for special tees with holes, welded tabs, or any other mounting device.** Recommended for level runs using a minimum schedule 80 pipe or square or rectangular steel tubing with a minimum .250" wall.



TYPE 316 STAINLESS STEEL

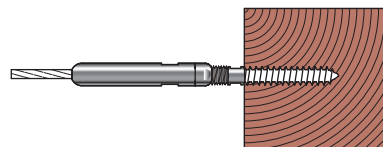
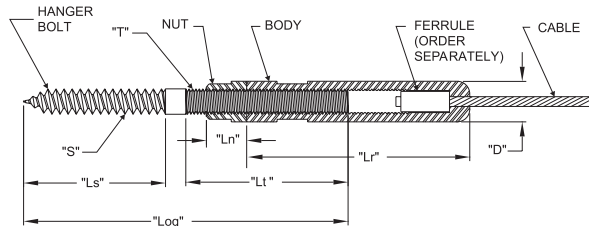
CABLE DIA.	PART NO.	*USE WITH FERRULE NO.	"S"	"T"	"Ls"	"Lt"	"Loq"	"Ln"	"Lr"	"D"
1/8"	A-JTB6	F-4	5/16-24	5/16-24 L.H.	.375"	2.00"	2.625"	.375"	2.75"	.500"
3/16"		F-6								
1/4"	A-JTB8	F-8	5/16-24	7/16-20 L.H.	.375"	2.50"	3.125"	.500"	3.00"	.625"
5/16"	A-JTB12	F-10	1/2-20	1/2-20 L.H.	.62"	3.00"	4.00"	.62"	4.50"	.744"
3/8"		F-12								

\*Order Ferrule Separately.

## Adjust-A-Body® with Hanger Bolt Tensioner

**This tensioner screws right into your wooden end post.**

There is no need for special mounting hardware.



TYPE 316 STAINLESS STEEL

CABLE DIA.	PART NO.	*USE WITH FERRULE NO.	"S"	"T"	"Ls"	"Lt"	"Loq"	"Ln"	"Lr"	"D"	DRILL SIZE REQUIRED	MINIMUM NOMINAL TIMBER SIZE
1/8"	A-JB6	F-4	5/16"	5/16-24 L.H.	1.50"	2.00"	3.75"	.375"	2.75"	.500"	1/4"	4 X 4
3/16"	A-JB6	F-6	5/16"	5/16-24 L.H.	1.50"	2.00"	3.75"	.375"	2.75"	.500"	1/4"	
1/4"	A-JB8	F-8	7/16"	7/16-20 L.H.	2.00"	2.50"	4.75"	.500"	3.00"	.625"	5/16"	

\*Order Ferrule Separately.

## Adjust-A-Body® with Extended Length Hanger Bolt Tensioner

Same as the above tensioner, except the **hanger bolt is 3" long**, allowing you to penetrate deeper into the post or wall if necessary. Offered for use with 1/8" and 3/16" cable.



TYPE 316 STAINLESS STEEL

CABLE DIA.	PART NUMBER	*USE WITH FERRULE NO.	"S"	"T"	"Ls"	"Lt"	"Loq"	"Ln"	"Lr"	"D"	DRILL SIZE REQ.	MIN. NOMINAL TIMBER SIZE
1/8"	A-JB6-L	F-4	5/16"	5/16-24 L.H.	1.50"	2.00"	5.25"	.375"	2.75"	.500"	1/4"	4 x 4
3/16"		F-6										

\*Order Ferrule Separately.

**Hanger Bolt Driver**  
See page 32 in this catalog

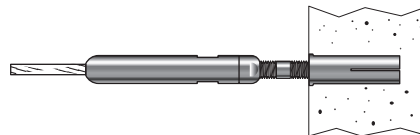
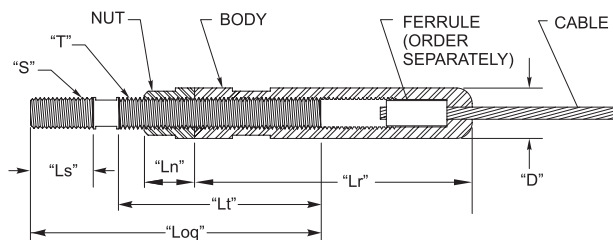


## Adjust-A-Body® with Concrete Anchor Bolt Tensioner

**Here is an easy, practical way to attach your tensioner to a concrete wall.**

The end screws into a commonly available concrete anchor (not included).

Order the concrete anchor separately from your local building supply outlet.



TYPE 316 STAINLESS STEEL

CABLE DIA.	PART NO.	*USE WITH FERRULE NO.	"S"	"T"	"Ls"	"Lt"	"Loq"	"Ln"	"Lr"	"D"	USE WITH "RED HEAD" BRAND CONCRETE ANCHOR	
1/8"	A-JAB6	F-4	3/8-16	5/16-24 L.H.	.500"	2.313"	3.188"	.375"	2.75"	.500"	RM-38	SRM-38
3/16"	A-JAB6	F-6										
1/4"	A-JAB8	F-8	1/2-13	7/16-20 L.H.	1.125"	2.500"	3.938"	.500"	3.00"	.625"	RM-12	SRM-12

\*Order Ferrule Separately.