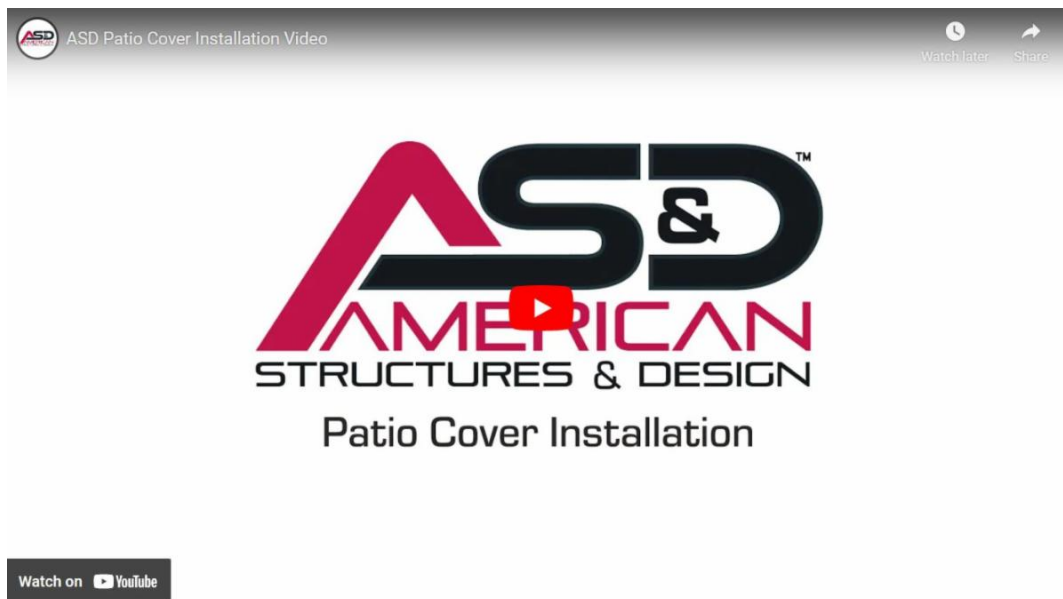




NOW AVAILABLE: Patio Cover Installation Video

New! The **Patio Cover Installation Video for V-Pan and Flat Pan** is **now LIVE** on the AS&D website. The comprehensive video provides detailed step-by-step instructions for efficient, hassle-free installation of AS&D patio covers.



[View All Our Patio Cover Installation Resources](#)

Aluminum - Metal of the Future



Ideal for both commercial and residential projects: aluminum is lightweight, strong, durable, and offers superior corrosion resistance. Virtually maintenance free aluminum does not rust, rot, swell, or split reducing cost of ownership.

Aluminum Design vs. Traditional Steel

	Factory fabricated for faster field installation	Strong, lightweight easy to move on the job site	Factory uniform production, no onsite welding	Virtually maintenance free, reducing cost of ownership
AS&D Aluminum Components	✓	✓	✓	✓
Traditional Steel	✗	✗	✗	✗

Why Aluminum?

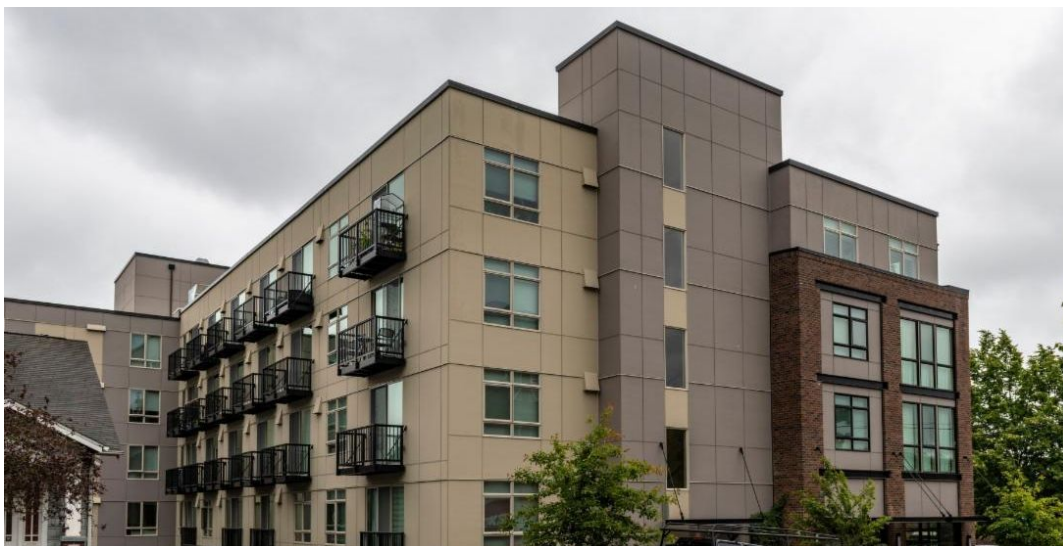
Aluminum, dubbed as the metal of the future, is the second most utilized metal, following steel.

The unique properties of aluminum, such as its lightweight nature, high strength, malleability, ease of fabrication, and corrosion resistance, render it exceptionally suitable for construction projects.

Aluminum is very easily recycled, helping the industry achieve its green building initiatives. AS&D recycles all post-fabrication scrap aluminum.



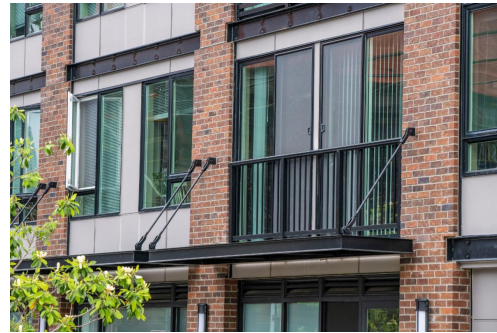
Project Spotlight: 6800 Roosevelt Seattle, WA



A new multi-family property in Seattle's downtown district, 6800 Roosevelt is adorned with **AS&D Aluminum Railings** and **Balcony Systems** on the ground level and balconies. All stories feature AS&D's

sturdy **Series 200 aluminum railing** with picket infill and a black anodized finish.

Contributing to LEED designation and complementing the building's industrial design style, AS&D's Aluminum Railings were easily installed and fabricated on site.



[**View the Entire Profile**](#)

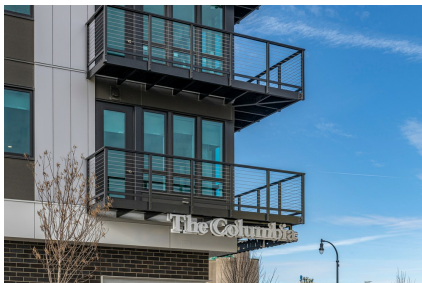
AS&D is a Premier Manufacturer and Distributor of Aluminum Railing, Balcony, and Sunshade Systems



Aluminum Railings for Residential and Commercial Projects



Stainless Steel Cable



Balcony Systems for Commercial Projects



Patio Covers

Contact us about your next project. We will get back to you, typically within one business day.

Two Locations to Serve You
Sumner, WA: 253-833-4343 | Portland, OR: 971-645-4201

American Structures and Design | 1801 132nd Ave. E, STE 100, Sumner, WA 98390

[Unsubscribe support@asandd.com](mailto:support@asandd.com)

[Update Profile](#) | [Constant Contact Data
Notice](#)

Sent by support@asandd.com powered by



Try email marketing for free today!