



ALUMINUM RAIL MOUNTING DETAIL

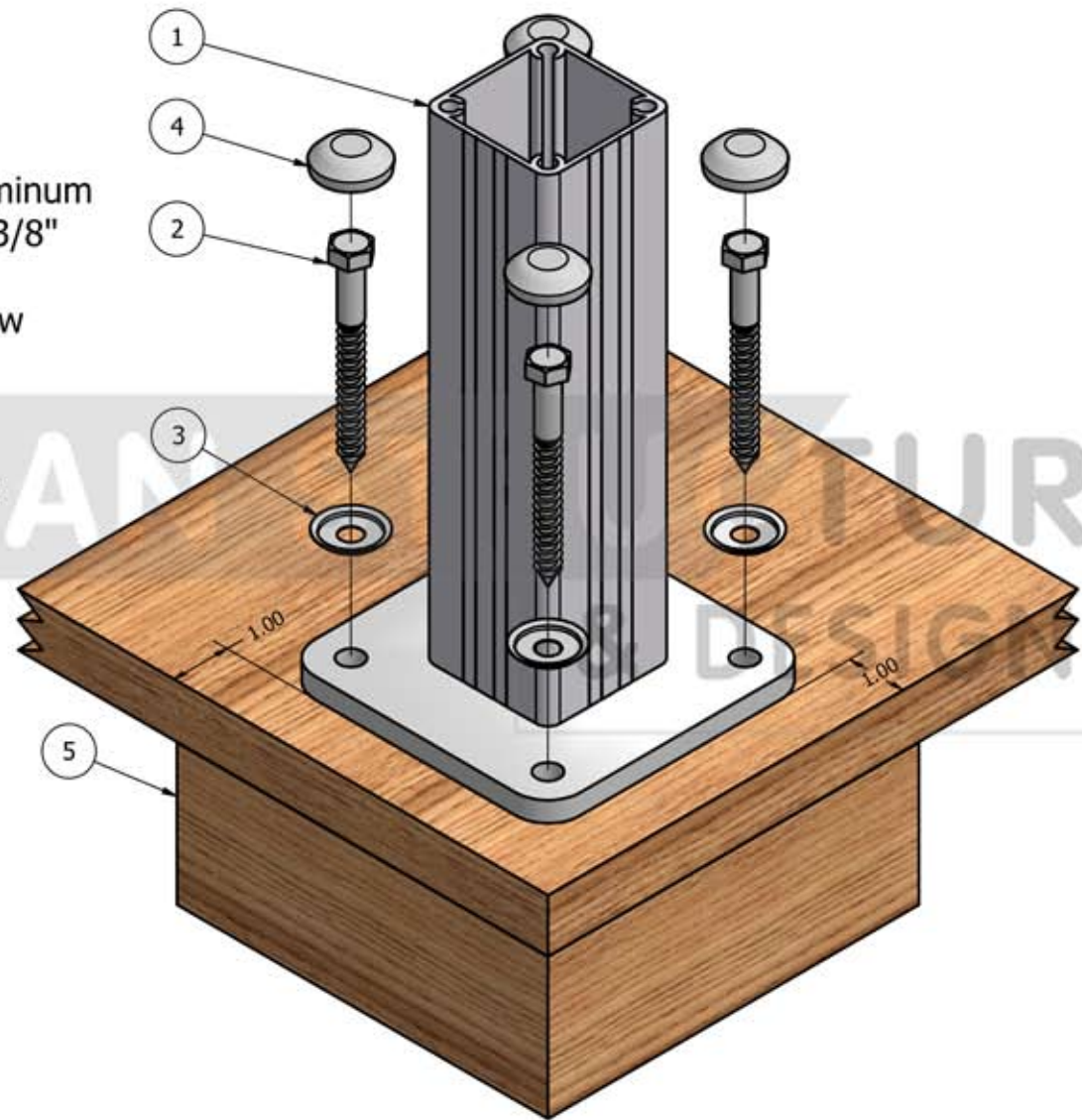
November 15, 2012

American Structures & Design, Inc
218 Stewart Rd SE
Pacific, WA 98047
877-887-9828

(253) 833-4343
Fax: (253) 833-4545

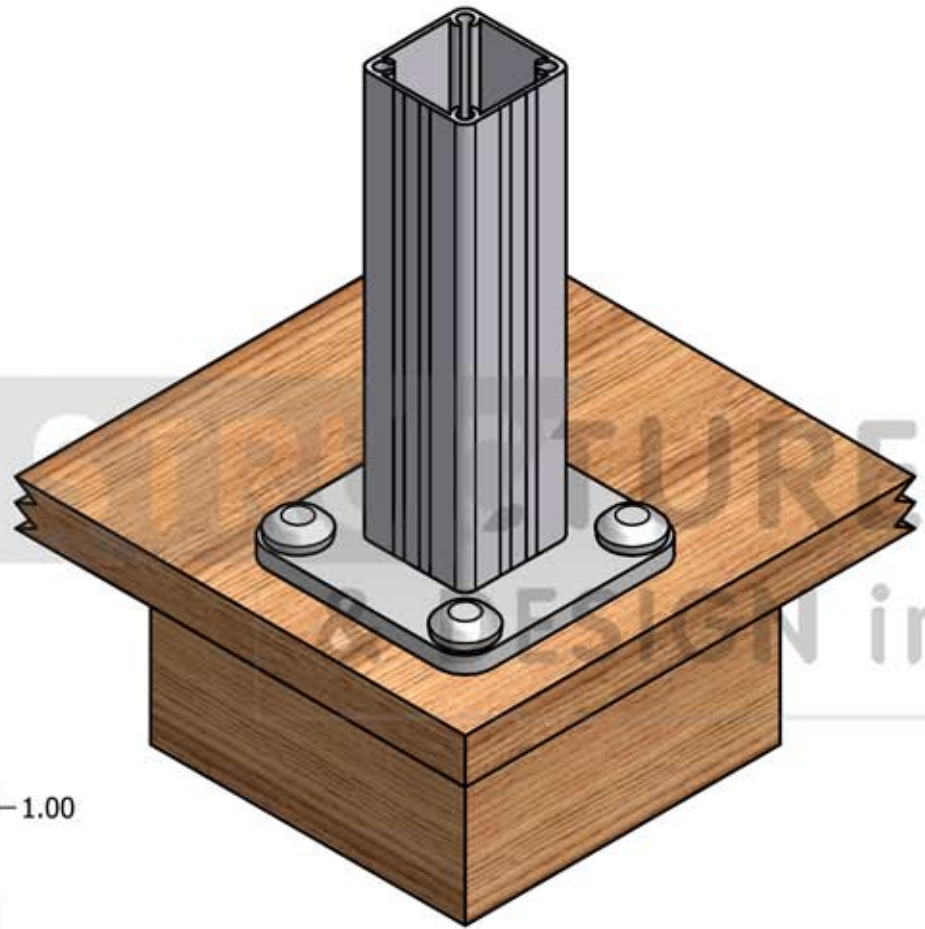
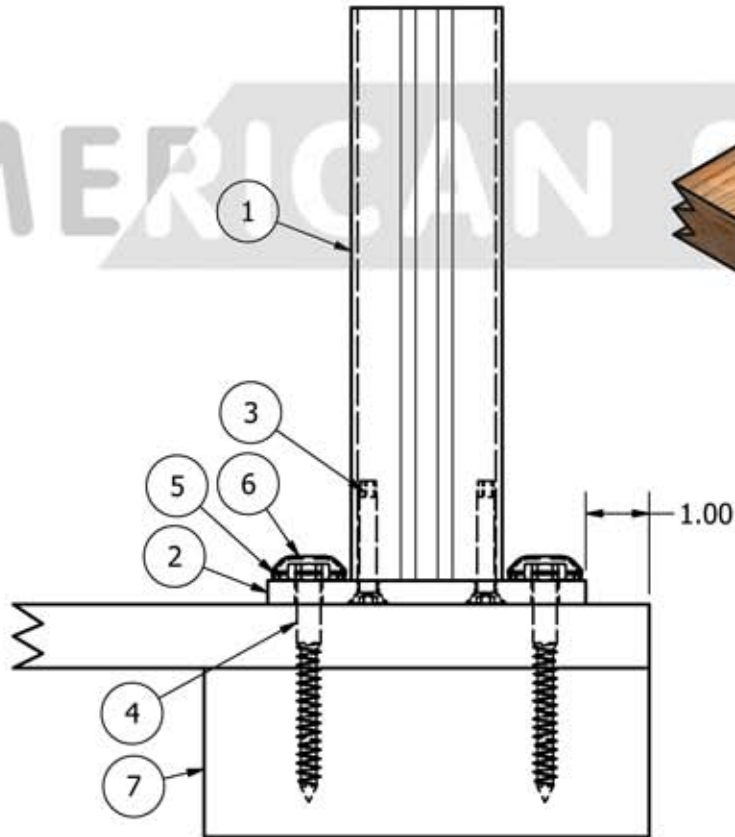
e-mail: info@americanstructures.com
www.americanstructures.com

- 1 2-3/8" x 2-3/8" Aluminum Post with 5" x 5" x 3/8" Base Plate
- 2 Ø3/8" x 4" Lag Screw (Min. 3.5" Embed)
- 3 Washer - Bolt Head Cover - CW
- 4 Nylon Bolt Cap - NC
- 5 Blocking

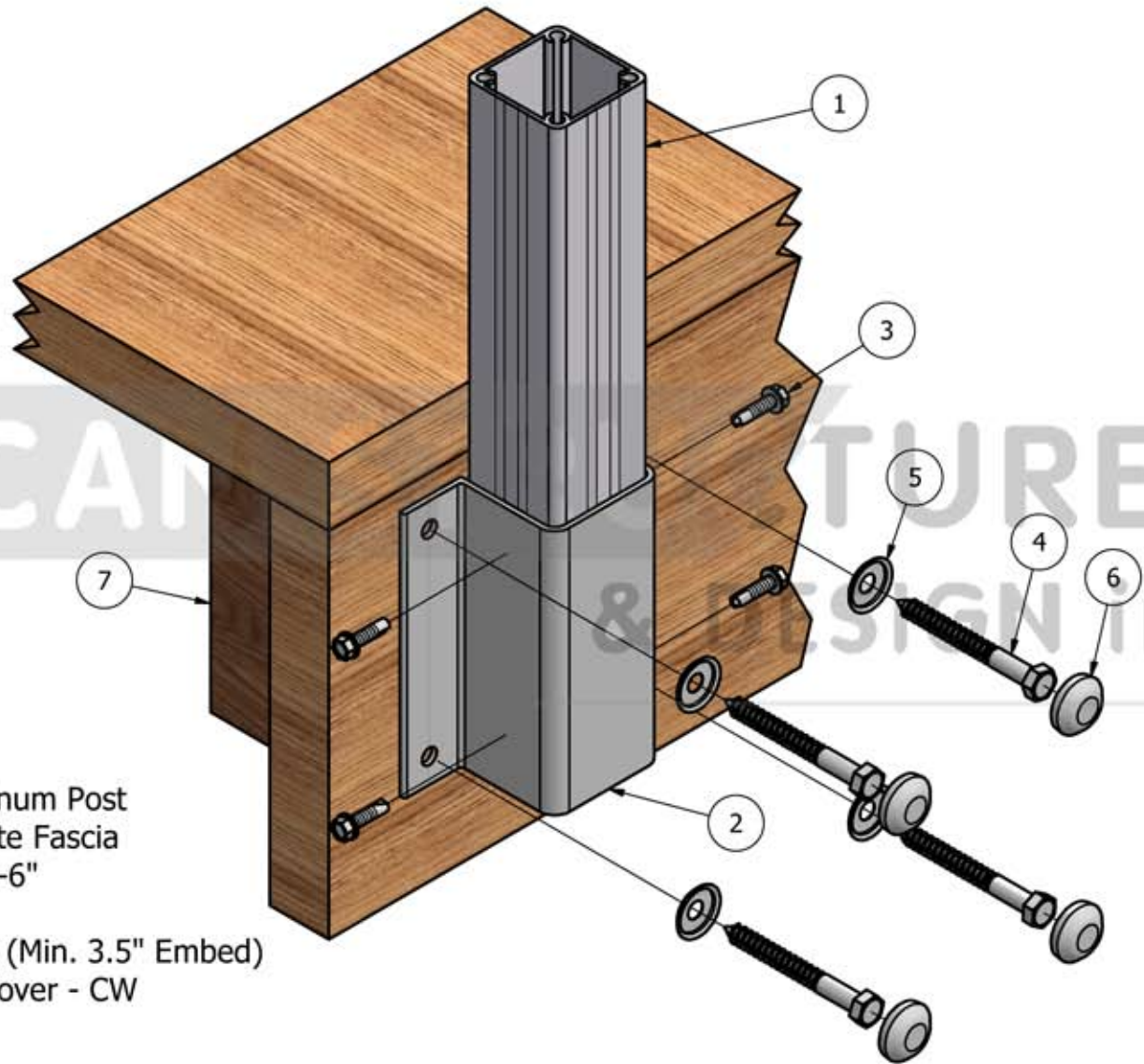


PART NO. SURFACE MOUNT	TOLL FREE 877-887-9828	AMERICAN STRUCTURES & DESIGN, INC. 218 STEWART ROAD SE, PACIFIC, WASHINGTON 98047
PROPERTY OF AMERICAN STRUCTURES & DESIGN inc.	PHONE 253-833-4343	SURFACE MOUNT ATTACHMENT
AMERICAN STRUCTURES & DESIGN, inc.	FAX 253-833-4545	www.americanstructures.com
		DATE

- 1 2-3/8" x 2-3/8" Aluminum Post
- 2 5" x 5" x 3/8" Base Plate
- 3 Base Plate Screw 142015
- 4 Ø3/8" x 4" Lag Screw (Min. 3.5" Embed)
- 5 Washer - Bolt Head Cover - CW
- 6 Nylon Bolt Cap - NC
- 7 Blocking

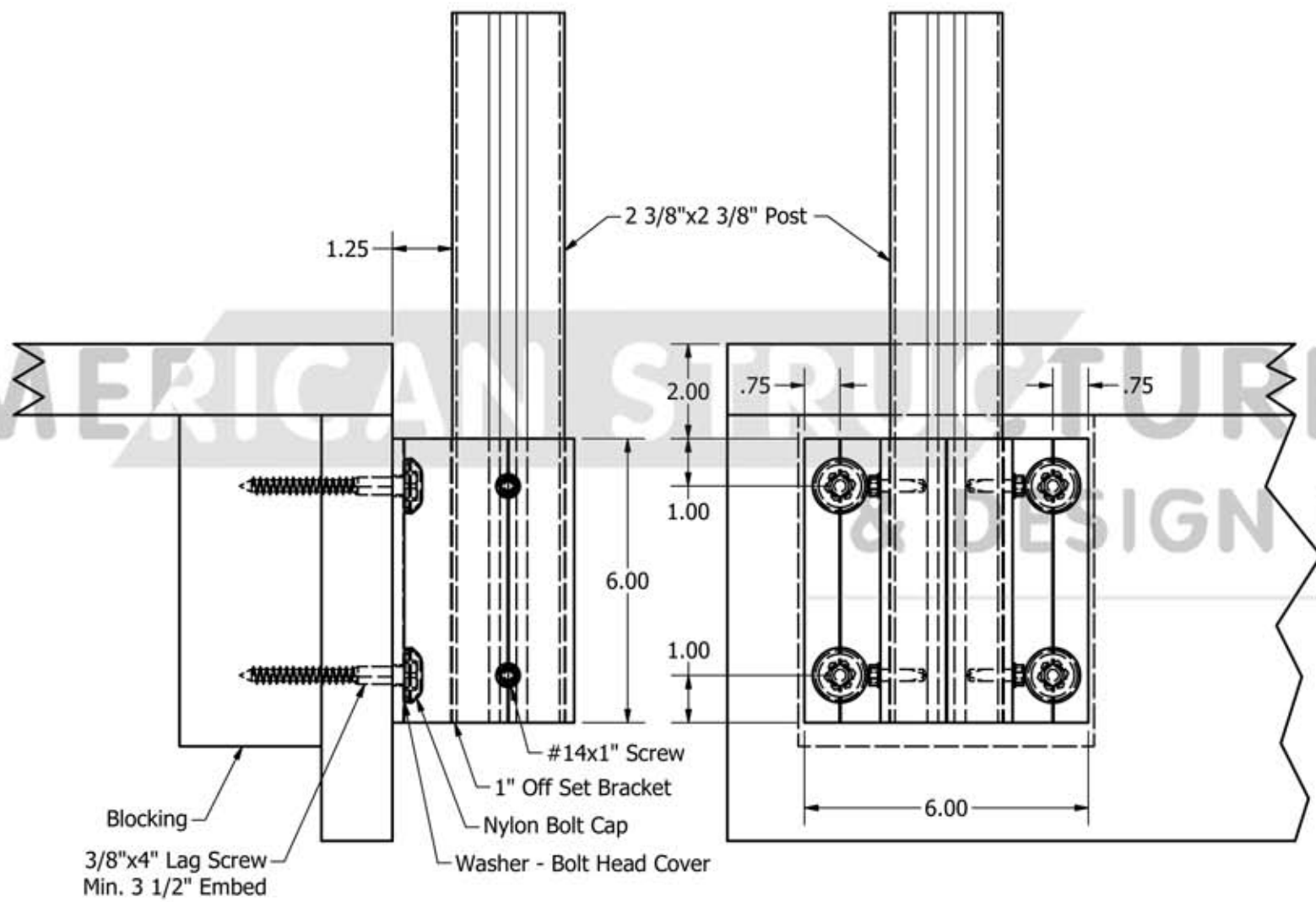


PART NO. SURFACE MOUNT	TOLL FREE 877-887-9828	AMERICAN STRUCTURES & DESIGN, INC. 218 STEWART ROAD SE, PACIFIC, WASHINGTON 98047
PROPERTY OF AMERICAN STRUCTURES & DESIGN inc.	PHONE 253-833-4343	SURFACE MOUNT ATTACHMENT
AMERICAN STRUCTURES & DESIGN, inc.	FAX 253-833-4545	DATE
www.americanstructures.com		



- 1 2-3/8" x 2-3/8" Aluminum Post
- 2 1" Off Set Intermediate Fascia Mount Bracket FMPB-6"
- 3 #14 x 1" Screw
- 4 Ø3/8" x 4" Lag Screw (Min. 3.5" Embed)
- 5 Washer - Bolt Head Cover - CW
- 6 Nylon Bolt Cap - NC
- 7 Blocking

PART NO. FASCIA MOUNT	TOLL FREE 877-887-9828	AMERICAN STRUCTURES & DESIGN, INC. 218 STEWART ROAD SE, PACIFIC, WASHINGTON 98047
PROPERTY OF AMERICAN STRUCTURES & DESIGN inc.	PHONE 253-833-4343	FASCIA MOUNT ATTACHMENT
<small>AMERICAN STRUCTURES & DESIGN, inc.</small>	www.americanstructures.com	DATE



PART NO. FASCIA MOUNT	TOLL FREE 877-887-9828	AMERICAN STRUCTURES & DESIGN, INC. 218 STEWART ROAD SE, PACIFIC, WASHINGTON 98047
PROPERTY OF AMERICAN STRUCTURES & DESIGN inc.	PHONE 253-833-4343	FASCIA MOUNT ATTACHMENT
<small>AMERICAN STRUCTURES & DESIGN, inc.</small>	www.americanstructures.com	DATE