



# SUNSHADE OVERVIEW

Smart Design and Efficiency Unite



# SUNSHADES OVERVIEW



Aluminum Sunshade louvers from AS&D serve both aesthetic and practical purposes, making them a valuable addition to commercial buildings. Sunshades are designed to block direct sunshine during the cooling season, while allowing sunlight during the winter. Offering six combinations of infill and trim types, along with spans up to 16’ wide. AS&D sunshades add architectural focal points, enhancing the overall visual appeal of the structure.

## ALUMINUM DESIGN vs TRADITIONAL STEEL

	Factory fabricated and painted for faster installation	Lightweight, easy-to-handle, and move on the job site	Uniform factory production	Multiple cost saving delivery options: Extrusions, Knock-down Pre-assembled	Choice of baked-on enamel or anodized finishes	Virtually maintenance free, no rust, rot, swelling, splits, or cracking
AS&D Aluminum Sunshade Systems	✓	✓	✓	✓	✓	✓
Steel	✗	✗	✗	✗	✗	✗

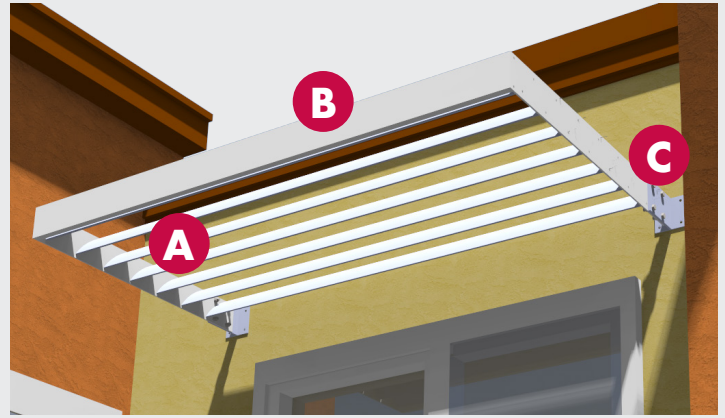
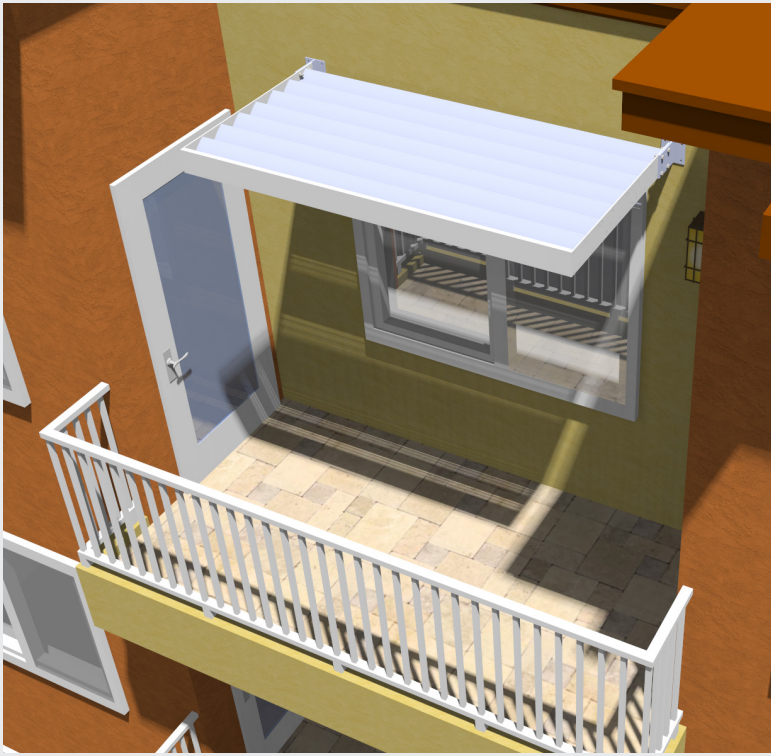


AS&D Aluminum Sunshade System

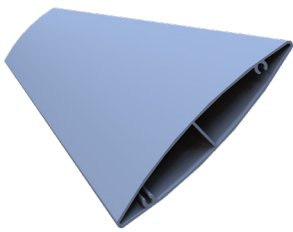


Traditional Steel

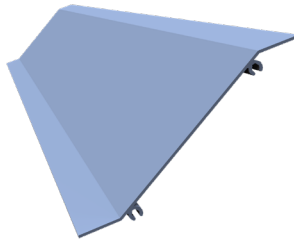
# CUSTOMIZE YOUR SUNSHADE



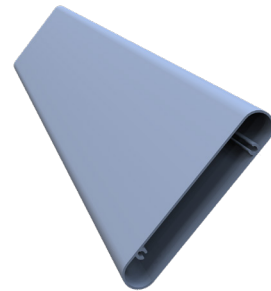
## A CHOOSE YOUR INFILL TYPE



Airfoil

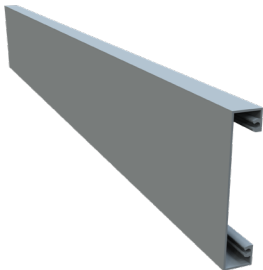


Blade

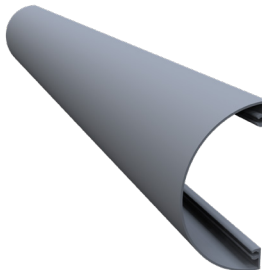


Tube

## B CHOOSE YOUR FRONT TRIM TYPE



Flat Trim



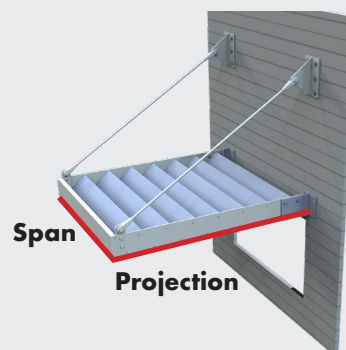
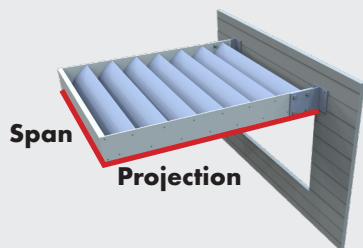
Radius Trim

## C CHOOSE YOUR BRACKET TYPE

Dependent on Projection (see back page)



# PROJECTION OVERVIEW



## Max Span Dimensions

Projection	Cantilevered w/5"D Bracket	Cantilevered w/7"D Bracket	Sag Rod (h < 60 ft)	Sag Rod (h > 60 ft)	Sag Rod with Pipe Sleeve (H > 60 ft)
3'0"	8'	13'	16'	16'	n/a
3'6"	6'	9'6"	16'	6'	16'
4'	5'	7'6"	16'	6'	16'
4'6"	4'	6'	16'	4'	16'
5'	3'	5'	12'6"	3'	14'6"
5'6"	2'6"	4'	9'	2'	13'
6'	2'	3'6"	7'	Use Pipe Sleeve	12'
6'6"	2'	3'	5'6"	Use Pipe Sleeve	11'
7'	Use 7" Deep Bracket	2'6"	4'	Use Pipe Sleeve	10'
7'6"	Use 7" Deep Bracket	2'	3'6"	Use Pipe Sleeve	9'6"
8'	Use 7" Deep Bracket	2'	2'6"	Use Pipe Sleeve	8'

**Ready to specify AS&D Sunshades for your next job? Download the submittal package at [americanstructures.com](http://americanstructures.com) or Contact Us and we will get back to you, typically within one business day.**