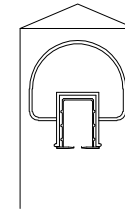


# PRE<sup>3</sup> ALUMINUM RAIL AND GLASS SYSTEM

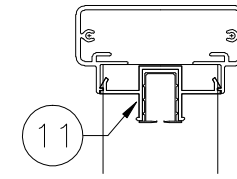
## SHEET NOTES:

1. PRE<sup>3</sup> TR100 SERIES ALUMINUM TOP RAIL: SEE DETAIL SHEET#2
2. PRE<sup>3</sup> PE 2 $\frac{3}{8}$ "X2 $\frac{3}{8}$ " POST-SURFACE MOUNT; SEE DETAIL SHEET#4 FOR OPTIONS
3. PRE<sup>3</sup> BR100 BOTTOM RAIL (OPTIONAL); SEE DETAIL SHEET#2
4. PRE<sup>3</sup> TEMPERED SAFETY GLASS INFILL:  $\frac{1}{4}$ " MINIMUM
5. PRE<sup>3</sup> RCB1 RAIL CONNECTING BLOCK (FOR TOP & BOTTOM RAIL); SEE DETAIL SHEET#3
6. PRE<sup>3</sup> GVS GLASS VINYL \*(TOP & BOTTOM); SEE DETAIL SHEET#2
7. PRE<sup>3</sup> FMPB-6" 1" OFFSET FASCIA MOUNT BRACKET; SEE DETAIL SHEET #5 FOR OPTIONS
8. PRE<sup>3</sup> POST WITH CORE MOUNT STYLE IN CONCRETE; SEE DETAIL SHEET #7
9. PRE<sup>3</sup> FLUSH MOUNTED FASCIA POST; SEE DETAIL SHEET#6 FOR OPTIONS
10. PRE<sup>3</sup> POST END CAP
11. PRE<sup>3</sup> INFILL FOR 200/999 WITH GVS-PICKET VINYL (TOP & BOTTOM); SEE DETAIL SHEET#2

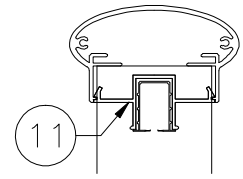
## TOP RAIL PROFILES



TR100  
SCALE=1:4

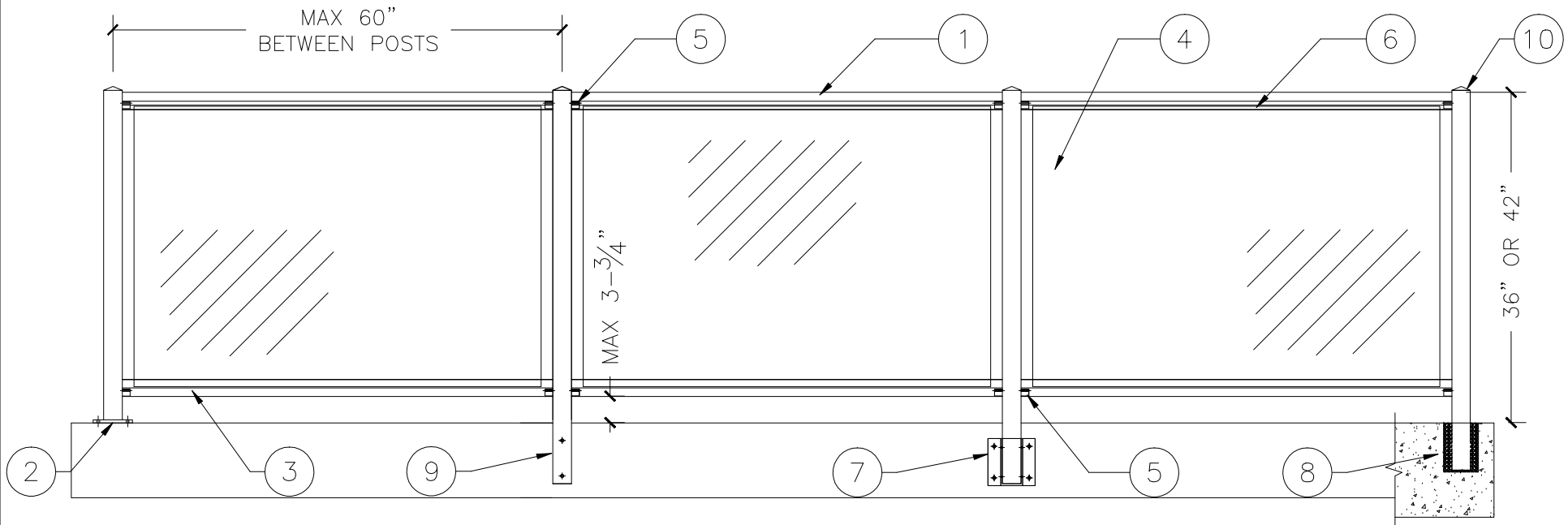


TR200  
SCALE=1:4



TR999  
SCALE=1:4

(CONTINUOUS TOP RAIL STYLES)



AMERICAN STRUCTURES  
& DESIGN INC.  
218 STEWART RD. SE,  
PACIFIC, WA 98047  
PH#- 253 833-4343  
FAX#-253 833-4545

RAIL NAME:

PRE<sup>3</sup> ALUMINUM RAILING W/GLASS INFILL SUBMITTAL

JOB NAME:

CONTRACTOR:

<http://americanstructures.com>

DRAWN BY:

D. FERONG

SCALE:

3/4"=1'-0"

DATE:

11. 15. 13

DRAWING #

1

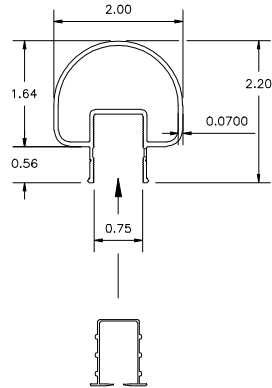
ALLOY:

6063-T6 AL

REV #

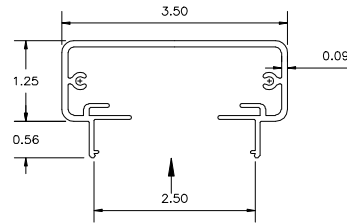
# PRE<sup>3</sup> POST AND RAIL EXTRUSION DETAILS

TR-100 PROFILE  
SCALE=1:3



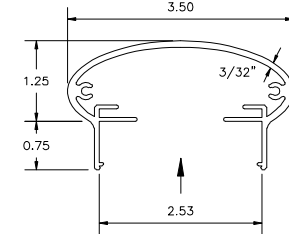
GVS VINYL FOR TOP RAIL FOR GLASS INFILL  
SCALE=1:3

TR-200 PROFILE  
SCALE=1:3



GLASS GVS INFILL VINYL FOR SERIES TR200 & TR999  
SCALE=1:3

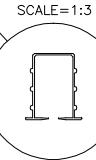
TR-999 PROFILE  
SCALE=1:3



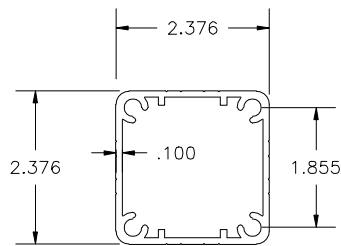
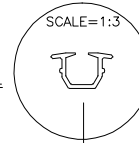
GLASS GVS INFILL VINYL FOR SERIES TR200 & TR999  
SCALE=1:3

TOP RAIL INFILL FOR GLASS

TOP RAIL INFILL FOR GLASS

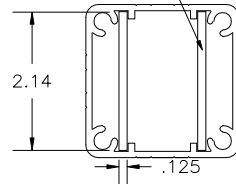


GVS VINYL @ BOTTOM RAIL FOR GLASS INFILL  
SCALE=1:3

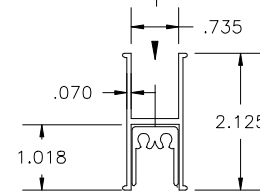


PE-POST EXTRUSION  
SCALE=1:3

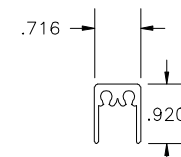
IPB: INTERNAL POST BRACING FOR HEAVY DUTY POST REQUIREMENTS



PE-POST EXTRUSION W/INTERNAL POST BRACE  
SCALE=1:3



BR-100 BOTTOM RAIL  
SCALE=1:3



RCB1; RAIL TO POST CONNECTING BLOCK  
SCALE=1:3

AMERICAN STRUCTURES & DESIGN INC.  
218 STEWART RD. SE,  
PACIFIC, WA 98047  
PH#-253 833-4343  
FAX#-253 833-4545

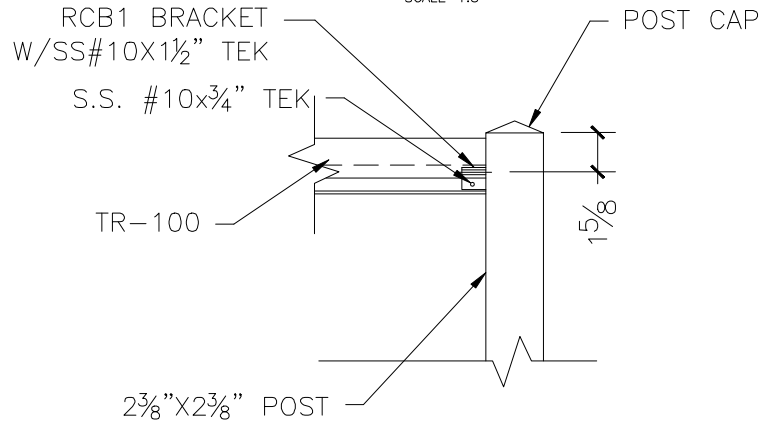
PART NAME: PRE<sup>3</sup> POST & RAIL EXTRUSION PROFILES  
PART NO:  
<http://americanstructures.com>

|           |            |
|-----------|------------|
| DRAWING # | 2          |
| ALLOY:    | 6063-T6 AL |
| REV #     |            |
| DRAWN BY: | D. FERONG  |
| SCALE:    | 1 : 3      |
| DATE:     | 10. 03. 13 |

# PRE<sup>3</sup> TOP & BOTTOM CONNECTION RAIL DETAILS

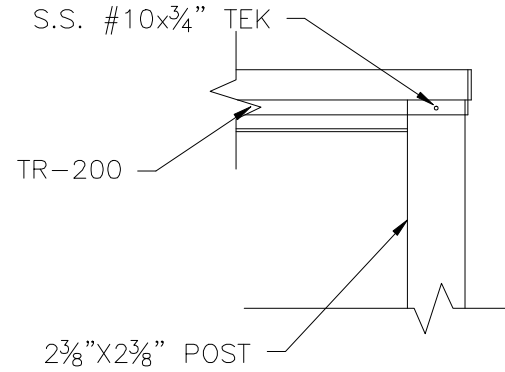
TR100 TOP RAIL ATTACHMENT

SCALE=1:8



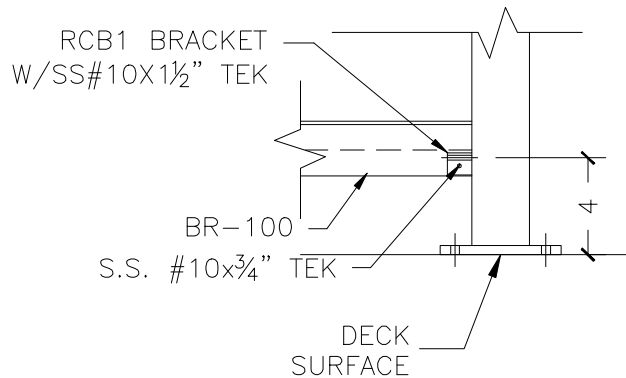
TR200 & 999 TOP RAIL ATTACHMENT

SCALE=1:8



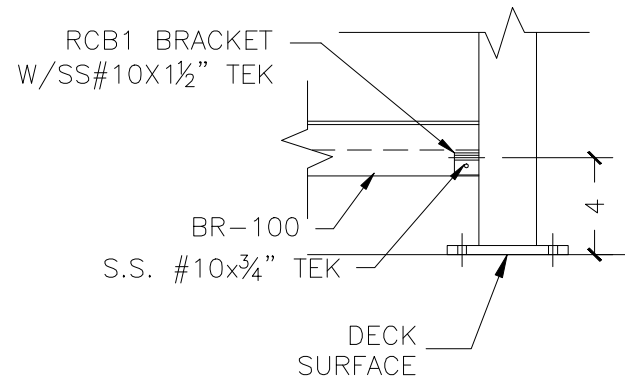
TR100 BOTTOM RAIL ATTACHMENT

SCALE=1:8



TR200 & 999 BOTTOM RAIL ATTACHMENT

SCALE=1:8

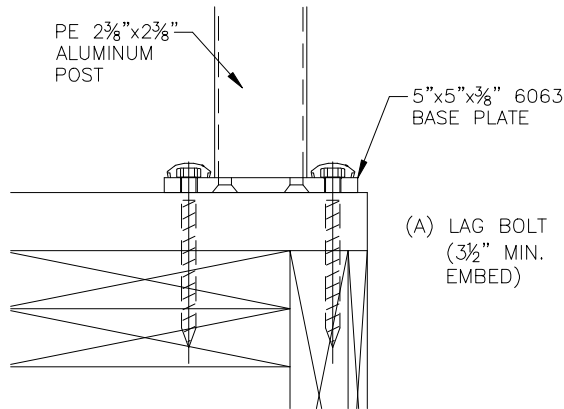


AMERICAN STRUCTURES  
& DESIGN INC.  
218 STEWART RD. SE,  
PACIFIC, WA 98047  
PH#- 253 833-4343  
FAX#-253 833-4545

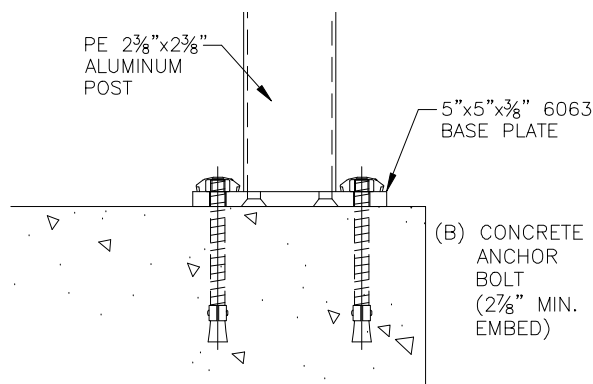
|  |             |                        |                     |
|--|-------------|------------------------|---------------------|
| RAIL NAME:<br>PRE <sup>3</sup> RAIL TOP & BOTTOM RAIL CONNECTION DETAILS SUBMITTAL |             | DRAWING #<br>3         |                     |
| JOB NAME:  | CONTRACTOR: | ALLOY:<br>6063-T6 AL   |                     |
| <a href="http://americanstructures.com">http://americanstructures.com</a>          |             | REV #                  | DATE:<br>10. 03. 13 |
|  |             | DRAWN BY:<br>D. FERONG | SCALE:<br>1 : 8     |

# PRE<sup>3</sup> SURFACE MOUNT POST ATTACHMENT OPTIONS AND DETAILS

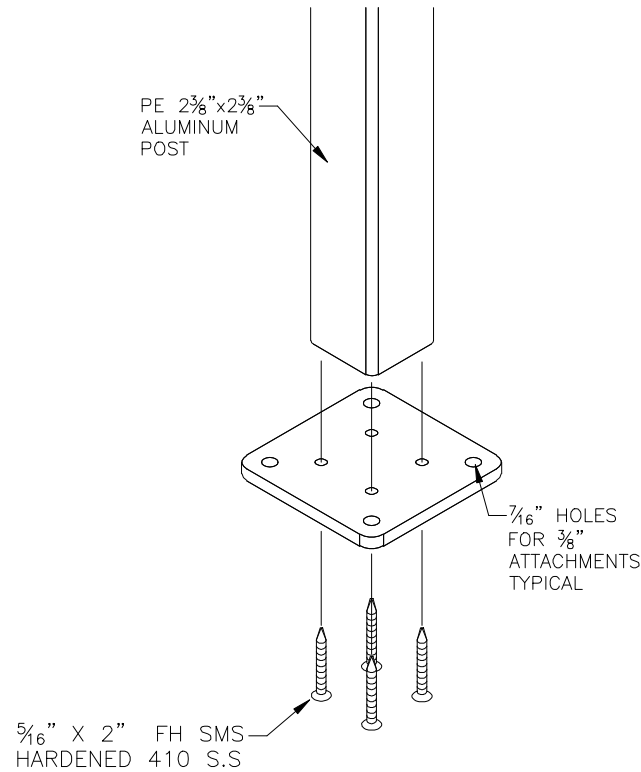
SURFACE MOUNT POST & BASE PLATE (WOOD)  
SCALE=1:5



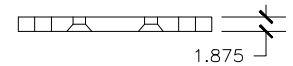
SURFACE MOUNT POST & BASE PLATE (CONCRETE)  
SCALE=1:5



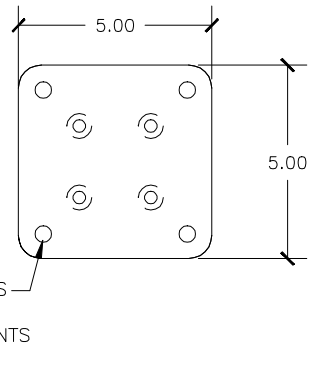
SURFACE MOUNT POST & BASE PLATE  
SCALE=1:5



BASE PLATE SIDE VIEW  
SCALE=1:5



SURFACE MOUNT BASE PLATE  
SCALE=1:5



ANCHOR ATTACHMENT OPTIONS:

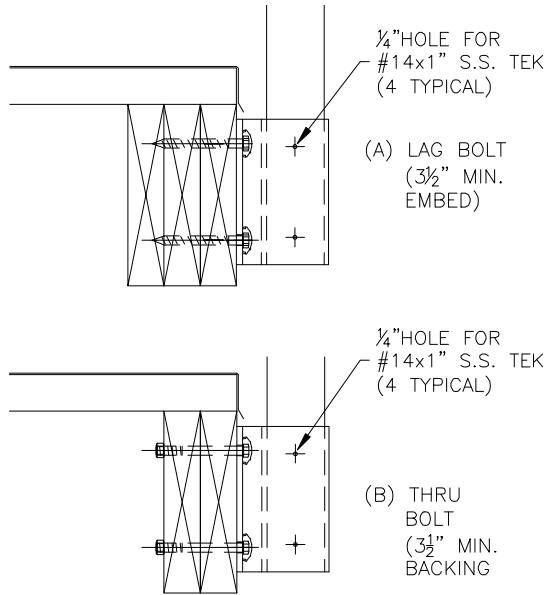
- (A) 3/8"  $\phi$  x LAG SCREWS OR
- (B) 3/8"  $\phi$  x EXPANSION ANCHORS

AMERICAN STRUCTURES  
& DESIGN INC.  
218 STEWART RD. SE,  
PACIFIC, WA 98047  
PH#-253 833-4343  
FAX#-253 833-4545

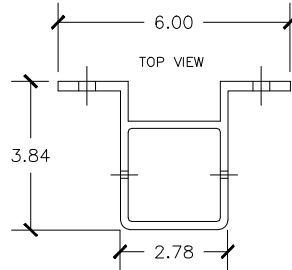
|  |             |                        |                     |
|--|-------------|------------------------|---------------------|
| PART NAME:<br>PRE <sup>3</sup> SURFACE POST MOUNTING ATTACHMENT DETAIL SUBMITTAL |             | DRAWING #<br>4         |                     |
| JOB NAME:  | CONTRACTOR: | ALLOY:<br>6063-T6 AL   |                     |
| http://americanstructures.com  |             | DRAWN BY:<br>D. FERONG | REV #               |
|  |             | SCALE:<br>1 : 5        | DATE:<br>10. 03. 13 |

# PRE<sup>3</sup> FASCIA MOUNT POST ATTACHMENT OPTIONS AND DETAILS

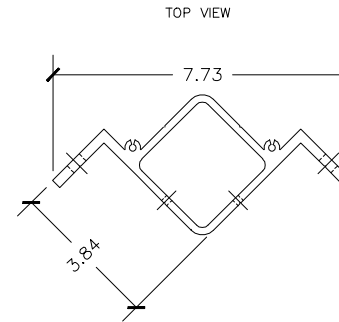
1" FMPB FASCIA MOUNT POST  
BRACKET FRONT VIEW  
SCALE=1:10



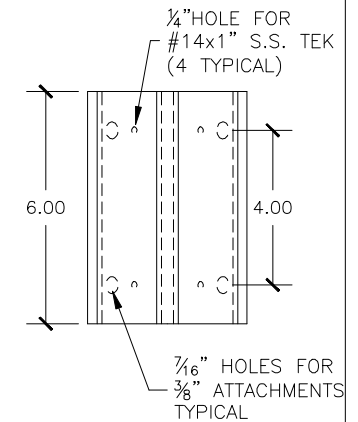
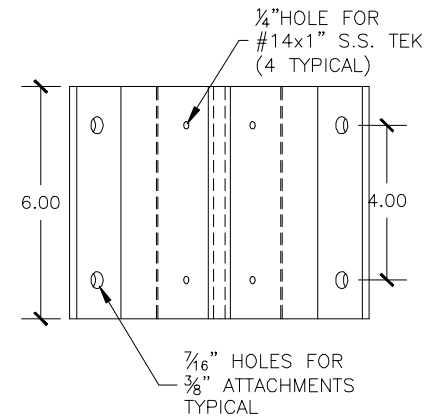
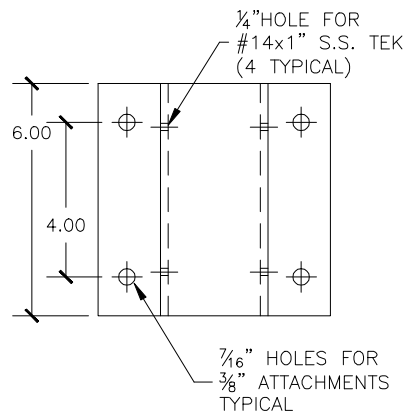
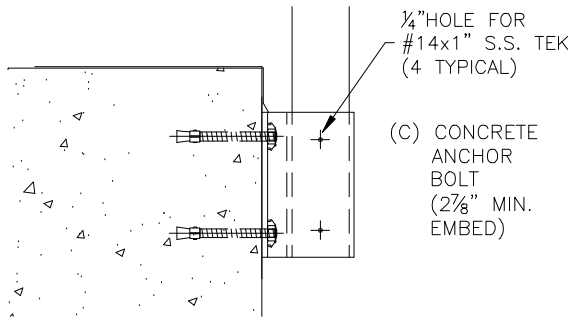
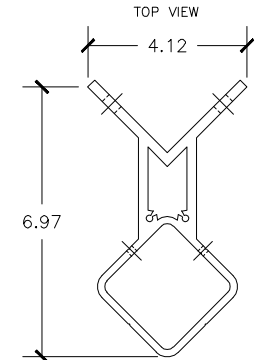
FMPB 1" STANDOFF  
FASCIA MOUNT  
INTERMEDIATE  
POST BRACKET  
SCALE=1:5



FMPB 1" STANDOFF  
FASCIA MOUNT  
INSIDE CORNER  
POST BRACKET  
SCALE=1:5



FMPB 1" STANDOFF  
FASCIA MOUNT  
OUTSIDE CORNER  
POST BRACKET  
SCALE=1:5



ANCHOR ATTACHMENT OPTIONS:

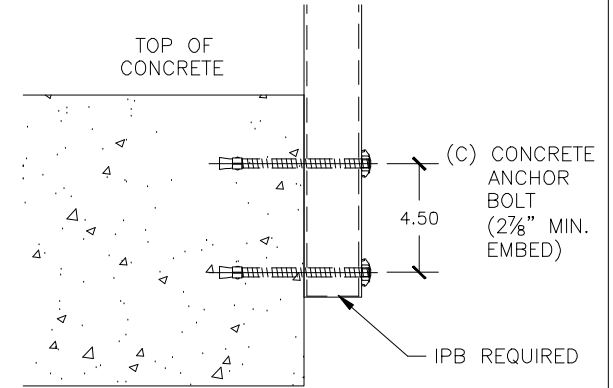
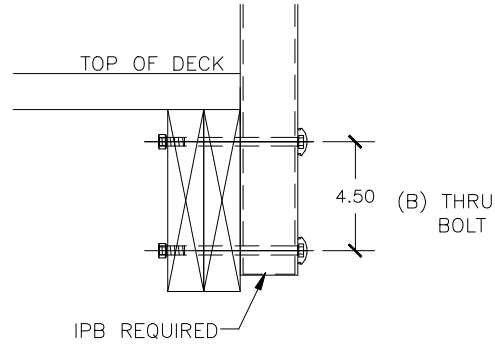
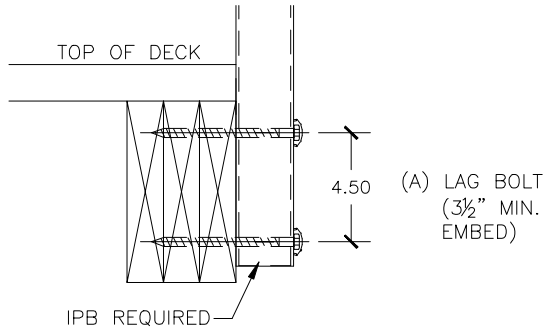
- (A) 3/8"  $\phi$  x LAG SCREWS OR
- (B) 3/8"  $\phi$  THRU BOLTS OR
- (C) 3/8"  $\phi$  x EXPANSION ANCHORS

AMERICAN STRUCTURES  
& DESIGN INC.  
218 STEWART RD. SE,  
PACIFIC, WA 98047  
PH#-253 833-4343  
FAX#-253 833-4545

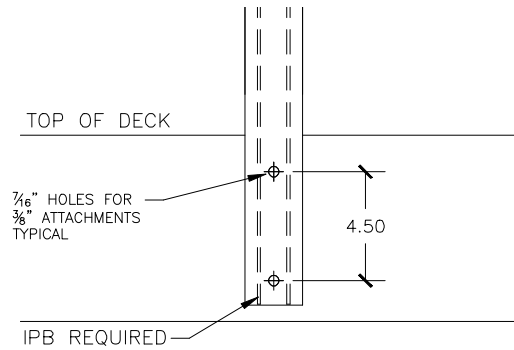
|   |             |                        |                  |
|---|-------------|------------------------|------------------|
| PART NAME:<br>PRE <sup>3</sup> FASCIA POST MOUNTING ATTACHMENT DETAIL SUBMITTAL |             | DRAWING #<br>5         |                  |
| JOB NAME:   | CONTRACTOR: | ALLOY:<br>6063-T6 AL   |                  |
| <a href="http://americanstructures.com">http://americanstructures.com</a>       |             | DRAWN BY:<br>D. FERONG | SCALE:<br>VARIES |
|   |             | DATE:<br>10. 03. 13    | REV #            |

# PRE<sup>3</sup> FLUSH MOUNT POST ATTACHMENT OPTIONS AND DETAILS

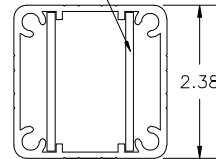
PE-POST EXTRUSION DIRECTLY MOUNTED TO FASCIA SIDE VIEWS  
SCALE=1:8



FLUSH MOUNT FASCIA ATTACHMENT  
SCALE=1:8



IPB: INTERNAL POST BRACING FOR HEAVY DUTY POST REQUIREMENTS



PE-POST EXTRUSION W/INTERNAL POST BRACE (IPB)  
SCALE=1:3

## ANCHOR ATTACHMENT OPTIONS:

- (A) 3/8"  $\phi$  x LAG SCREWS OR
- (B) 3/8"  $\phi$  THRU BOLTS OR
- (C) 3/8"  $\phi$  x EXPANSION ANCHORS

AMERICAN STRUCTURES & DESIGN INC.  
218 STEWART RD. SE,  
PACIFIC, WA 98047  
PH#-253 833-4343  
FAX#-253 833-4545

PART NAME:

PRE<sup>3</sup> FLUSH MOUNT POST MOUNTING ATTACHMENT DETAIL SUBMITTAL

JOB NAME:

CONTRACTOR:

DRAWING #

6

ALLOY:

6063-T6 AL

REV #

<http://americanstructures.com>

DRAWN BY:

D. FERONG

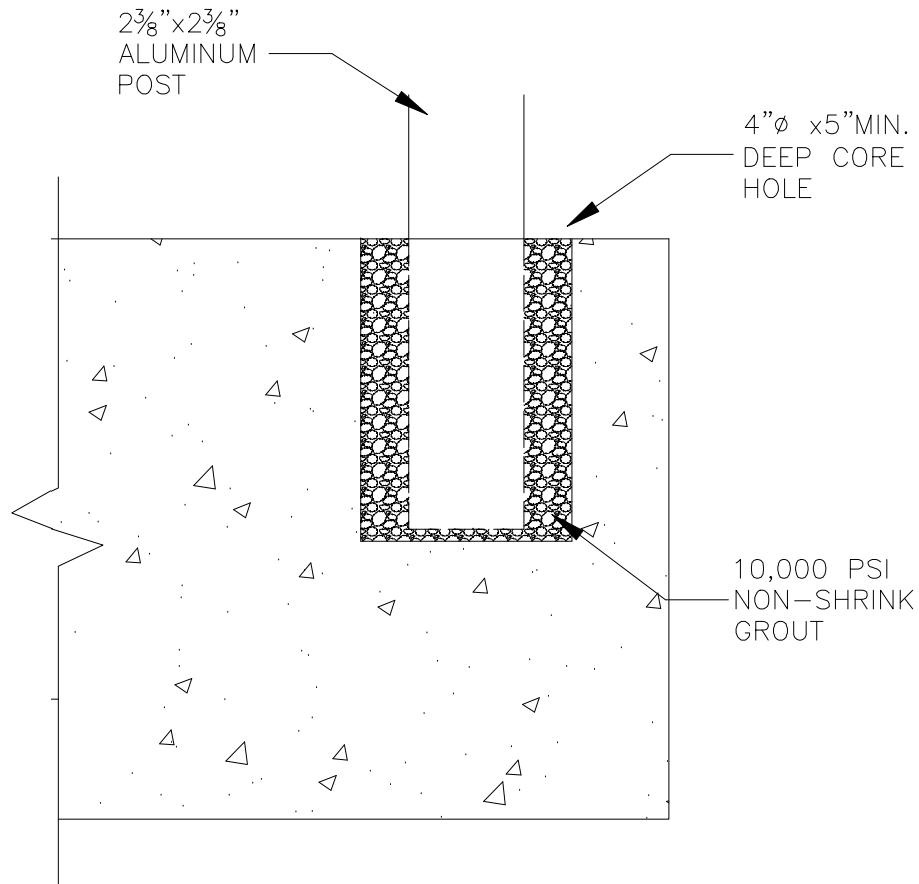
SCALE:

VARIES

DATE:

10. 03. 13

# POST CORE MOUNTING ATTACHMENT DETAILS



POST CORE MOUNT DETAIL  
SCALE=3"=1'-0"

AMERICAN STRUCTURES  
& DESIGN INC.  
218 STEWART RD. SE,  
PACIFIC, WA 98047  
PH#-253 833-4343  
FAX#-253 833-4545

|   |  |   |  |            |            |
|---|--|---|--|------------|------------|
| PART NAME:  |  | PRE <sup>3</sup> POST CORE MOUNTING DETAILS |  | DRAWING #  | 7          |
| JOB NAME:   |  | CONTRACTOR:                                 |  | ALLOY:     |            |
|   |  |   |  | 6063-T6 AL |            |
|   |  |   |  | REV #      |            |
| <a href="http://americanstructures.com">http://americanstructures.com</a> |  | DRAWN BY:                                   |  | SCALE:     | DATE:      |
|   |  | D. FERONG                                   |  | 3"=1'-0"   | 10. 03. 13 |