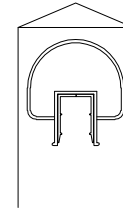


PRE³ ALUMINUM RAIL AND PICKET SYSTEM

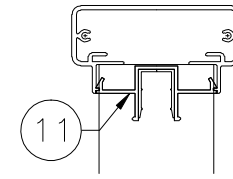
SHEET NOTES:

1. PRE³ TR100 SERIES ALUMINUM TOP RAIL; SEE DETAIL SHEET#2
2. PRE³ PE-2 $\frac{3}{8}$ "X2 $\frac{3}{8}$ " POST-SURFACE MOUNT; SEE DETAIL SHEET#4 FOR OPTIONS
3. PRE³ BR100-ALUMINUM BOTTOM RAIL
4. PRE³ PT1- $\frac{5}{8}$ "X $\frac{9}{8}$ " ALUMINUM PICKET INFILL
5. PRE³ RCB1-RAIL CONNECTING BLOCK (FOR TOP & BOTTOM RAIL); SEE DETAIL SHEET#3
6. PRE³ SP41-ALUMINUM PICKET SPACER *(TOP & BOTTOM)
7. PRE³ FMPB-6" 1" OFFSET FASCIA MOUNT BRACKET; SEE DETAIL SHEET #5 FOR OPTIONS
8. PRE³ POST WITH CORE MOUNT IN CONCRETE; SEE DETAIL SHEET #7
9. PRE³ FLUSH MOUNTED FASCIA POST; SEE DETAIL SHEET#6 FOR OPTIONS
10. PRE³ PC-POST CAP
11. PRE³ INFILL FOR 200/999 WITH PVI-PICKET VINYL (TOP & BOTTOM); SEE DETAIL SHEET#2

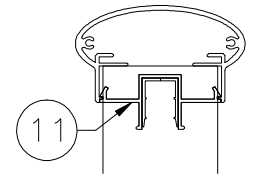
TOP RAIL PROFILES



TR100
SCALE=1:4

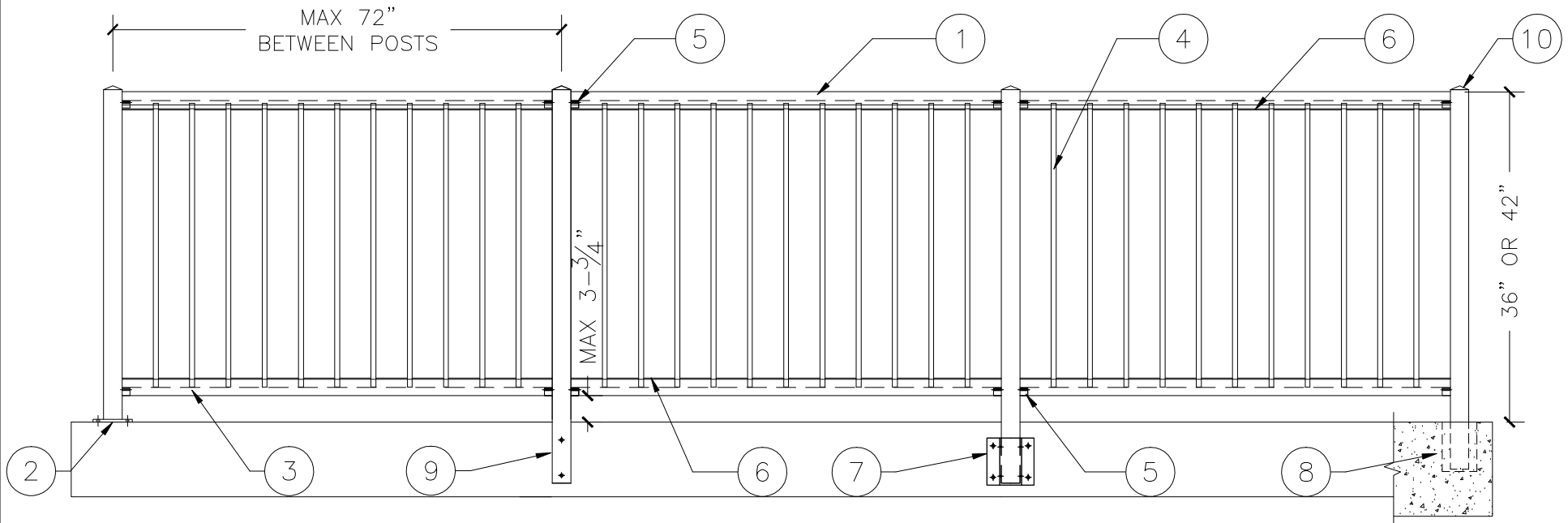


TR200
SCALE=1:4



TR999
SCALE=1:4

(CONTINUOUS TOP RAIL STYLES)



AMERICAN STRUCTURES
& DESIGN INC.
218 STEWART RD. SE,
PACIFIC, WA 98047
PH#- 253 833-4343
FAX#-253 833-4545

RAIL NAME:

PRE³ ALUMINUM RAILING W/PICKET INFILL SUBMITTAL

JOB NAME:

CONTRACTOR:

<http://americanstructures.com>

DRAWN BY:

D. FERONG

SCALE:

3/4"=1'-0"

DATE:

11. 13. 13

DRAWING #

1

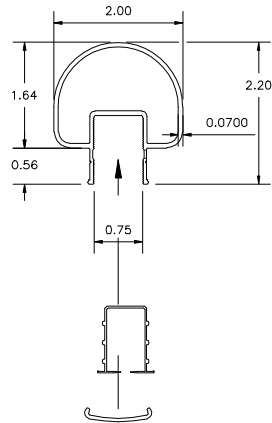
ALLOY:

6063-T6 AL

REV #

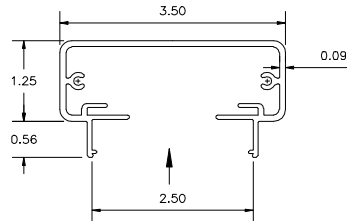
POST AND RAIL EXTRUSION DETAILS

TR-100 PROFILE
SCALE=1:3



PVI PICKET VINYL & SP41
@ TOP RAIL FOR TR100
SCALE=1:3

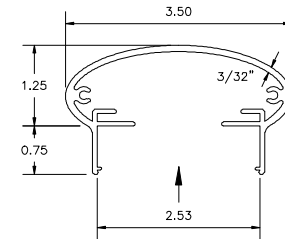
TR-200 PROFILE
SCALE=1:3



TOP RAIL INFILL
FOR PICKET

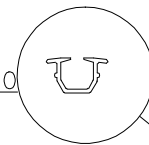
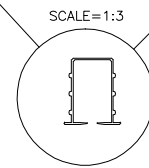
PVI PICKET INFILL VINYL FOR
SERIES TR200 & TR999
SCALE=1:3

TR-999 PROFILE
SCALE=1:3

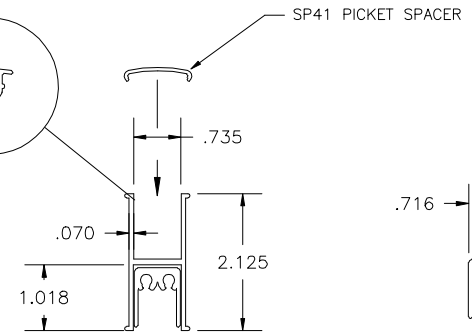


TOP RAIL INFILL
FOR PICKET

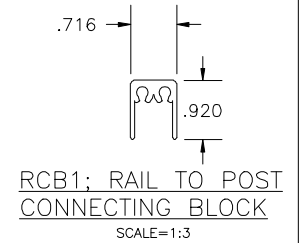
PVI PICKET INFILL VINYL FOR
SERIES TR200 & TR999
SCALE=1:3



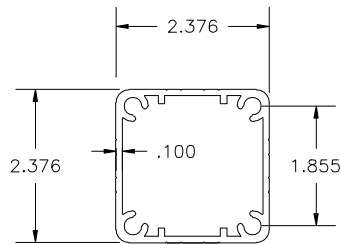
PICKET PVI VINYL @
BOTTOM RAIL FOR BR100
SCALE=1:3



BR-100 BOTTOM
RAIL PROFILE
SCALE=1:3

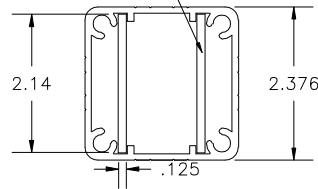


RCB1; RAIL TO POST
CONNECTING BLOCK
SCALE=1:3

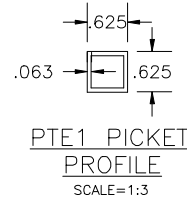


PE-POST EXTRUSION
PROFILE
SCALE=1:3

IPB; INTERNAL POST
BRACING FOR
HEAVY DUTY POST
REQUIREMENTS



PE-POST EXTRUSION
W/INTERNAL SUPPORTS FOR
HEAVY DUTY POST CONDITIONS
SCALE=1:3



PTE1 PICKET
PROFILE
SCALE=1:3

AMERICAN STRUCTURES
& DESIGN INC.
218 STEWART RD. SE,
PACIFIC, WA 98047
PH#-253 833-4343
FAX#-253 833-4545

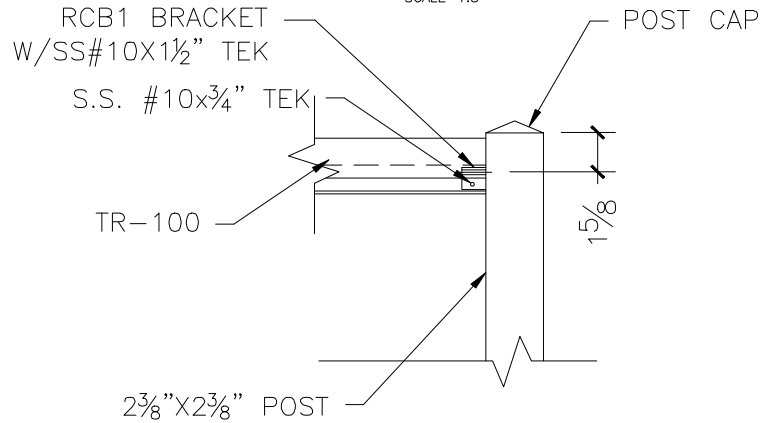
PART NAME: PRE ³ POST & RAIL EXTRUSION PROFILES	
PART NO:	
http://americanstructures.com	

DRAWING #	2
ALLOY:	6063-T6 AL
REV #	
DRAWN BY:	D. FERONG
SCALE:	1 : 3
DATE:	10. 03. 13

PRE³ TOP & BOTTOM CONNECTION RAIL DETAILS

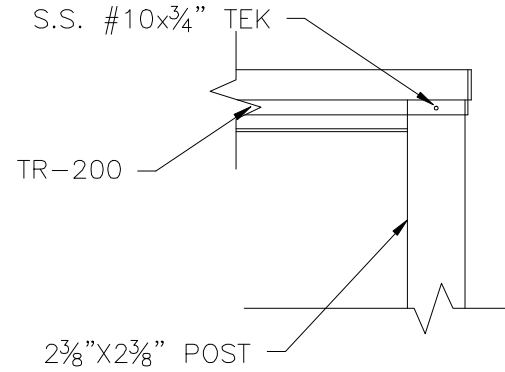
TR100 TOP RAIL ATTACHMENT

SCALE=1:8



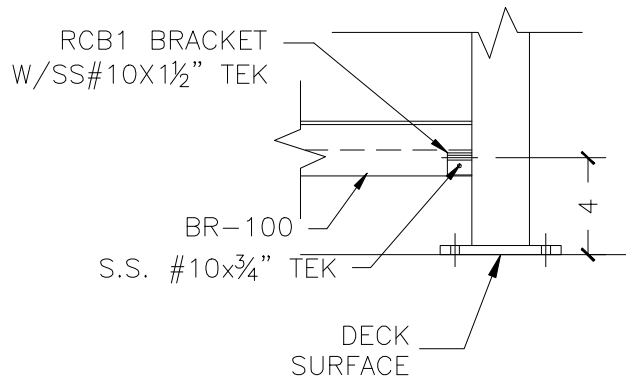
TR200 & 999 TOP RAIL ATTACHMENT

SCALE=1:8



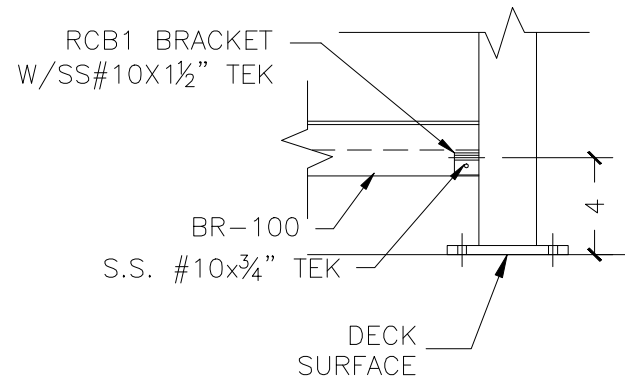
TR100 BOTTOM RAIL ATTACHMENT

SCALE=1:8



TR200 & 999 BOTTOM RAIL ATTACHMENT

SCALE=1:8

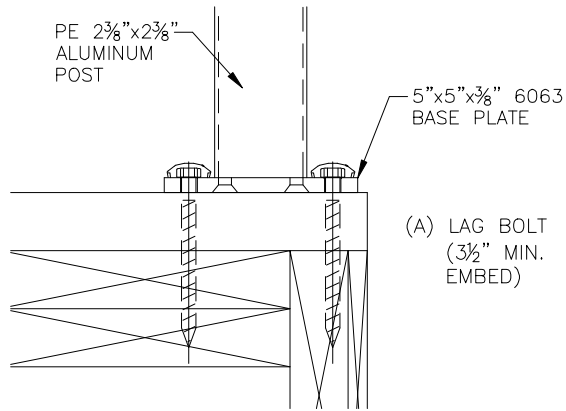


AMERICAN STRUCTURES
& DESIGN INC.
218 STEWART RD. SE,
PACIFIC, WA 98047
PH#- 253 833-4343
FAX#-253 833-4545

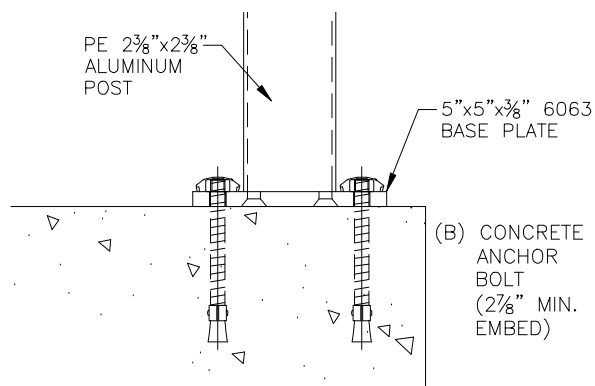
RAIL NAME: PRE ³ RAIL TOP & BOTTOM RAIL CONNECTION DETAILS SUBMITTAL		DRAWING # 3	
JOB NAME:	CONTRACTOR:	ALLOY: 6063-T6 AL	
http://americanstructures.com		REV #	
DRAWN BY: D. FERONG		SCALE: 1 : 8	DATE: 10. 03. 13

PRE³ SURFACE MOUNT POST ATTACHMENT OPTIONS AND DETAILS

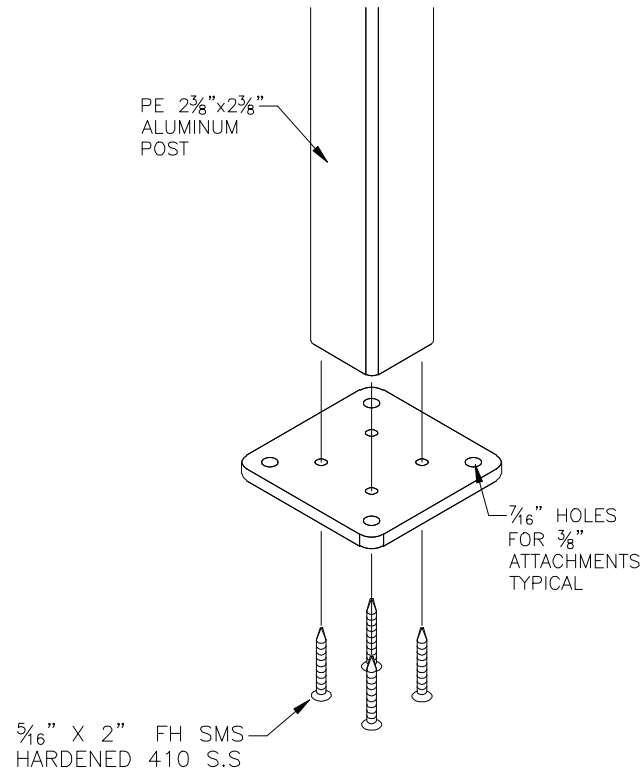
SURFACE MOUNT POST & BASE PLATE (WOOD)
SCALE=1:5



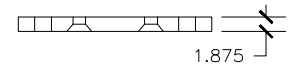
SURFACE MOUNT POST & BASE PLATE (CONCRETE)
SCALE=1:5



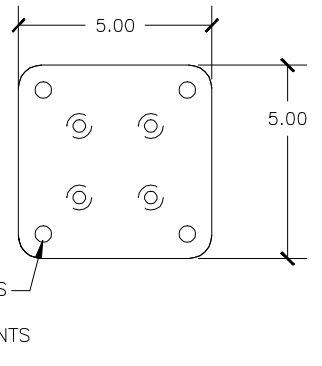
SURFACE MOUNT POST & BASE PLATE
SCALE=1:5



BASE PLATE SIDE VIEW
SCALE=1:5



SURFACE MOUNT BASE PLATE
SCALE=1:5



ANCHOR ATTACHMENT OPTIONS:

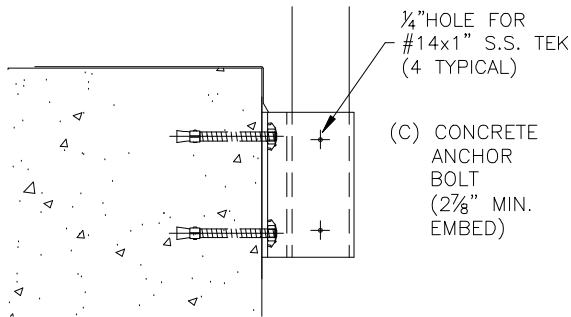
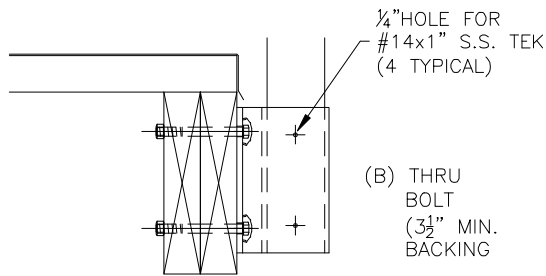
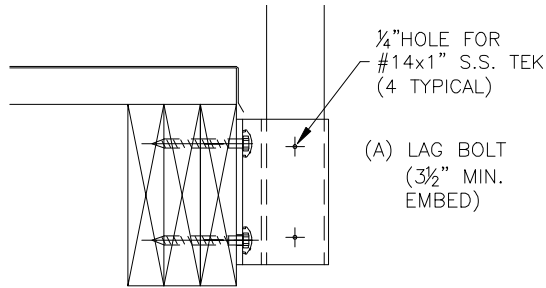
- (A) 3/8" ϕ x LAG SCREWS OR
- (B) 3/8" ϕ x EXPANSION ANCHORS

AMERICAN STRUCTURES
& DESIGN INC.
218 STEWART RD. SE,
PACIFIC, WA 98047
PH#-253 833-4343
FAX#-253 833-4545

PART NAME: PRE ³ SURFACE POST MOUNTING ATTACHMENT DETAIL SUBMITTAL		DRAWING # 4	
JOB NAME:	CONTRACTOR:	ALLOY: 6063-T6 AL	
http://americanstructures.com		DRAWN BY: D. FERONG	REV #
		SCALE: 1 : 5	DATE: 10. 03. 13

PRE³ FASCIA MOUNT POST ATTACHMENT OPTIONS AND DETAILS

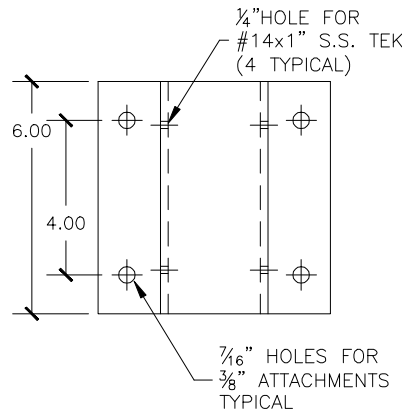
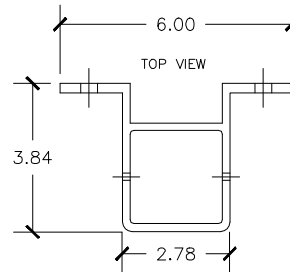
1" FMPB FASCIA MOUNT POST
BRACKET FRONT VIEW
SCALE=1:10



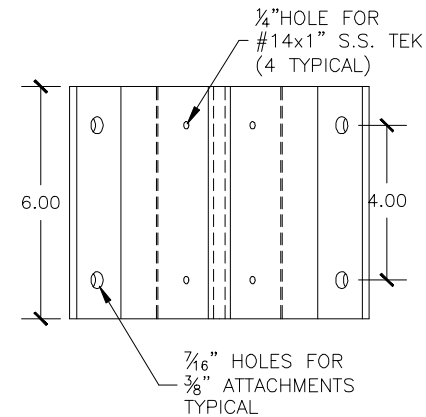
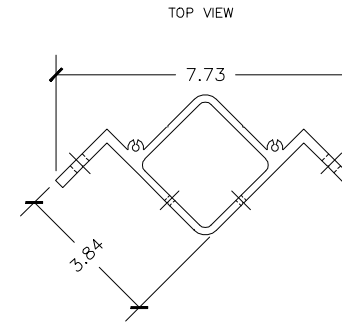
ANCHOR ATTACHMENT OPTIONS:

- (A) 3/8" ϕ x LAG SCREWS OR
- (B) 3/8" ϕ THRU BOLTS OR
- (C) 3/8" ϕ x EXPANSION ANCHORS

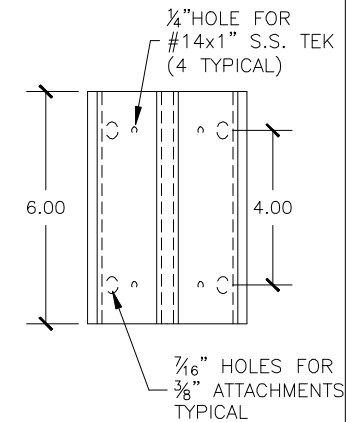
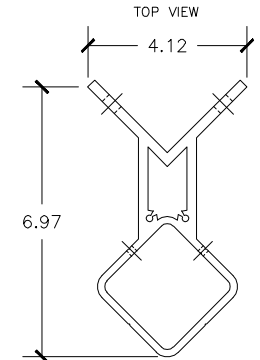
FMPB 1" STANDOFF
FASCIA MOUNT
INTERMEDIATE
POST BRACKET
SCALE=1:5



FMPB 1" STANDOFF
FASCIA MOUNT
INSIDE CORNER
POST BRACKET
SCALE=1:5



FMPB 1" STANDOFF
FASCIA MOUNT
OUTSIDE CORNER
POST BRACKET
SCALE=1:5

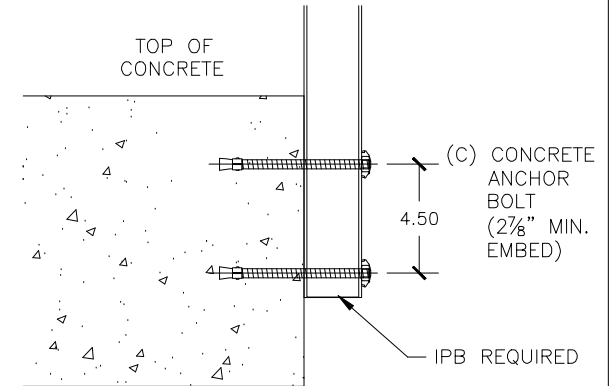
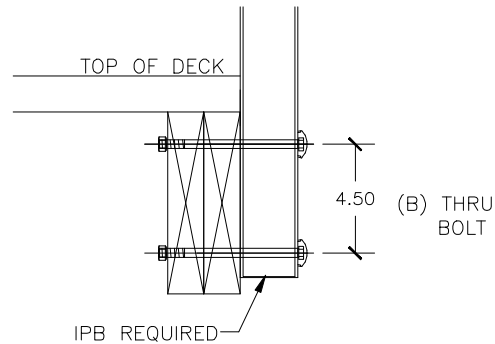
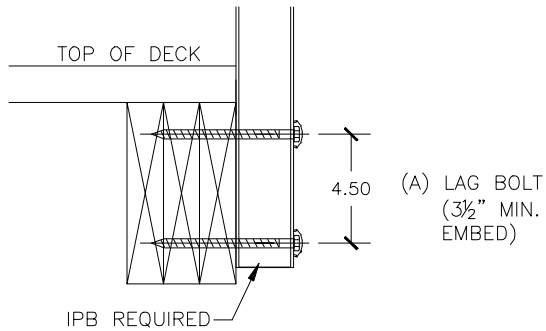


AMERICAN STRUCTURES
& DESIGN INC.
218 STEWART RD. SE,
PACIFIC, WA 98047
PH#-253 833-4343
FAX#-253 833-4545

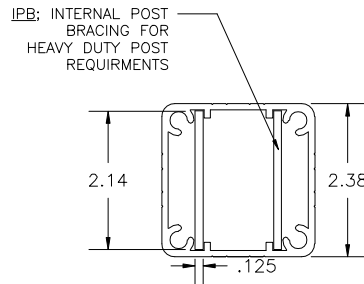
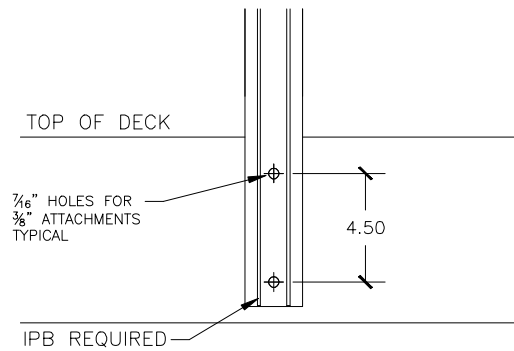
PART NAME: PRE ³ FASCIA POST MOUNTING ATTACHMENT DETAIL SUBMITTAL		DRAWING # 5	
JOB NAME:	CONTRACTOR:	ALLOY: 6063-T6 AL	
http://americanstructures.com		DRAWN BY: D. FERONG	SCALE: VARIES
		DATE: 10. 03. 13	

PRE³ FLUSH MOUNT POST ATTACHMENT OPTIONS AND DETAILS

PE-POST EXTRUSION DIRECTLY MOUNTED TO FASCIA SIDE VIEWS
SCALE=1:8



FLUSH MOUNT FASCIA ATTACHMENT
SCALE=1:8



PE-POST EXTRUSION W/INTERNAL POST BRACE (IPB)
SCALE=1:3

ANCHOR ATTACHMENT OPTIONS:

- (A) $\frac{3}{8}$ " ϕ x LAG SCREWS OR
- (B) $\frac{3}{8}$ " ϕ THRU BOLTS OR
- (C) $\frac{3}{8}$ " ϕ x EXPANSION ANCHORS

AMERICAN STRUCTURES
& DESIGN INC.
218 STEWART RD. SE,
PACIFIC, WA 98047
PH#-253 833-4343
FAX#-253 833-4545

PART NAME:

PRE³ POST FLUSH MOUNTING ATTACHMENT DETAILS

PART NO:

<http://americanstructures.com>

DRAWN BY:

D. FERONG

SCALE:

VARIES

DATE:

10. 03. 13

DRAWING #

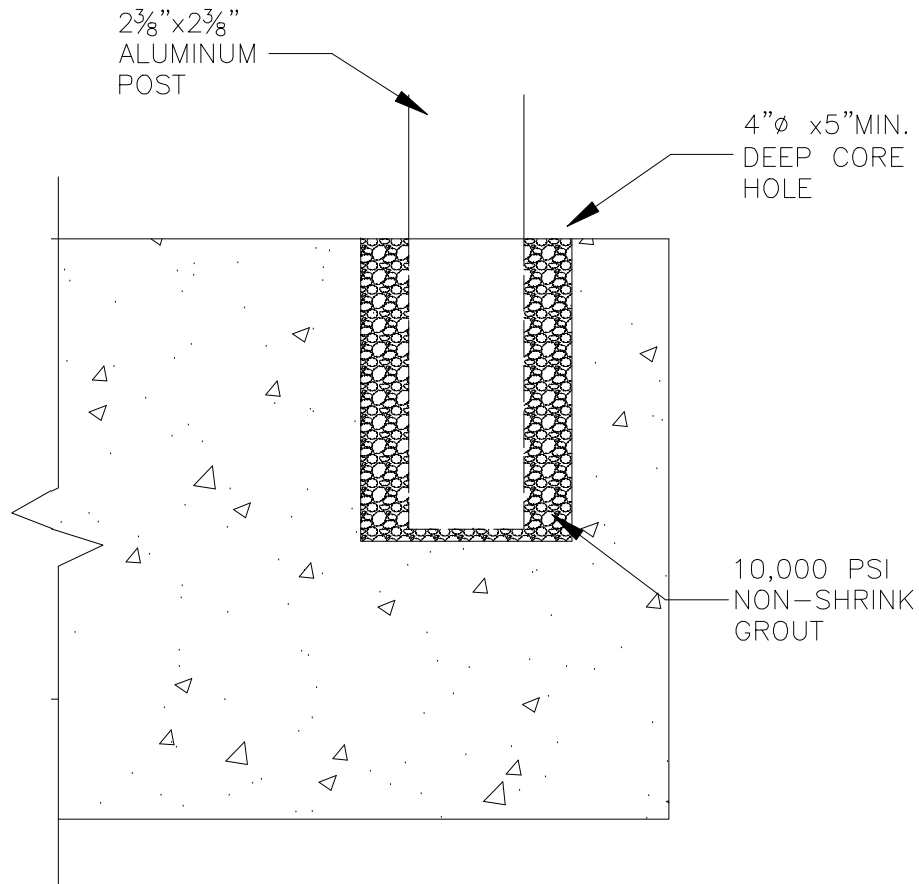
6

ALLOY:

6063-T6 AL

REV #

POST CORE MOUNTING ATTACHMENT DETAILS



POST CORE MOUNT DETAIL
SCALE=3"=1'-0"

AMERICAN STRUCTURES
& DESIGN INC.
218 STEWART RD. SE,
PACIFIC, WA 98047
PH#-253 833-4343
FAX#-253 833-4545

PART NAME:		PRE ³ POST CORE MOUNTING DETAILS		DRAWING #	7
JOB NAME:		CONTRACTOR:		ALLOY:	
				6063-T6 AL	
				REV #	
http://americanstructures.com		DRAWN BY:		SCALE:	DATE:
		D. FERONG		3"=1'-0"	10. 03. 13