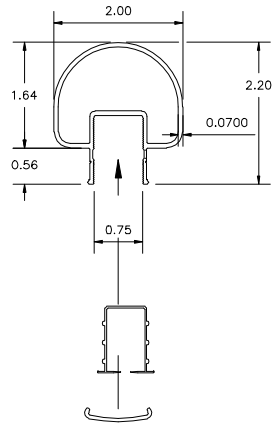


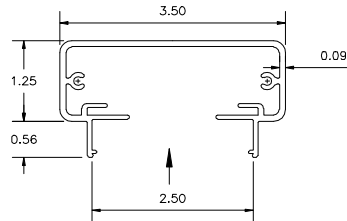
POST AND RAIL EXTRUSION DETAILS

TR-100 PROFILE
SCALE=1:3



PVI PICKET VINYL & SP41
@ TOP RAIL FOR TR100
SCALE=1:3

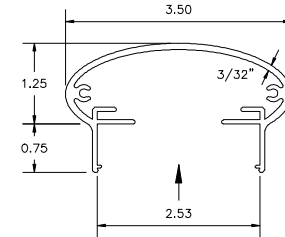
TR-200 PROFILE
SCALE=1:3



TOP RAIL INFILL
FOR PICKET

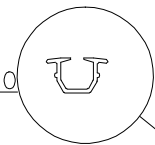
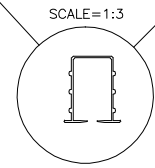
PVI PICKET INFILL VINYL FOR
SERIES TR200 & TR999
SCALE=1:3

TR-999 PROFILE
SCALE=1:3

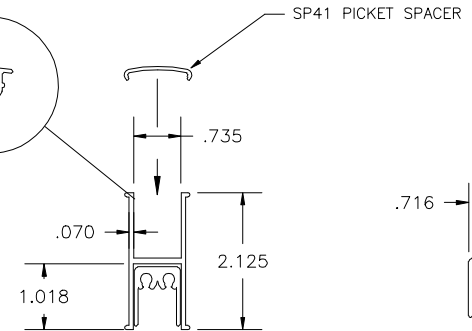


TOP RAIL INFILL
FOR PICKET

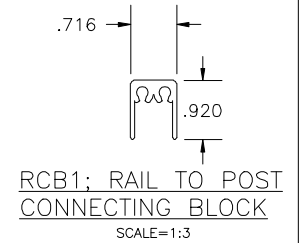
PVI PICKET INFILL VINYL FOR
SERIES TR200 & TR999
SCALE=1:3



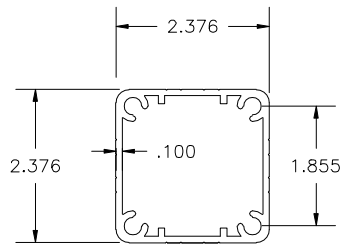
PICKET PVI VINYL @
BOTTOM RAIL FOR BR100
SCALE=1:3



BR-100 BOTTOM
RAIL PROFILE
SCALE=1:3

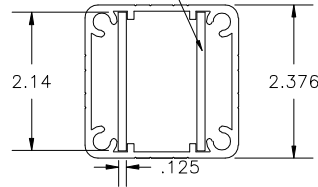


RCB1; RAIL TO POST
CONNECTING BLOCK
SCALE=1:3

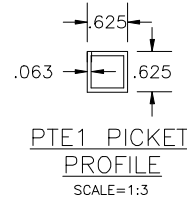


PE-POST EXTRUSION
PROFILE
SCALE=1:3

IPB; INTERNAL POST
BRACING FOR
HEAVY DUTY POST
REQUIREMENTS



PE-POST EXTRUSION
W/INTERNAL SUPPORTS FOR
HEAVY DUTY POST CONDITIONS
SCALE=1:3



PTE1 PICKET
PROFILE
SCALE=1:3

AMERICAN STRUCTURES
& DESIGN INC.
218 STEWART RD. SE,
PACIFIC, WA 98047
PH#-253 833-4343
FAX#-253 833-4545

PART NAME: PRE ³ POST & RAIL EXTRUSION PROFILES	
PART NO:	
http://americanstructures.com	

DRAWING #	2
ALLOY:	6063-T6 AL
REV #	
DRAWN BY:	D. FERONG
SCALE:	1 : 3
DATE:	10. 03. 13