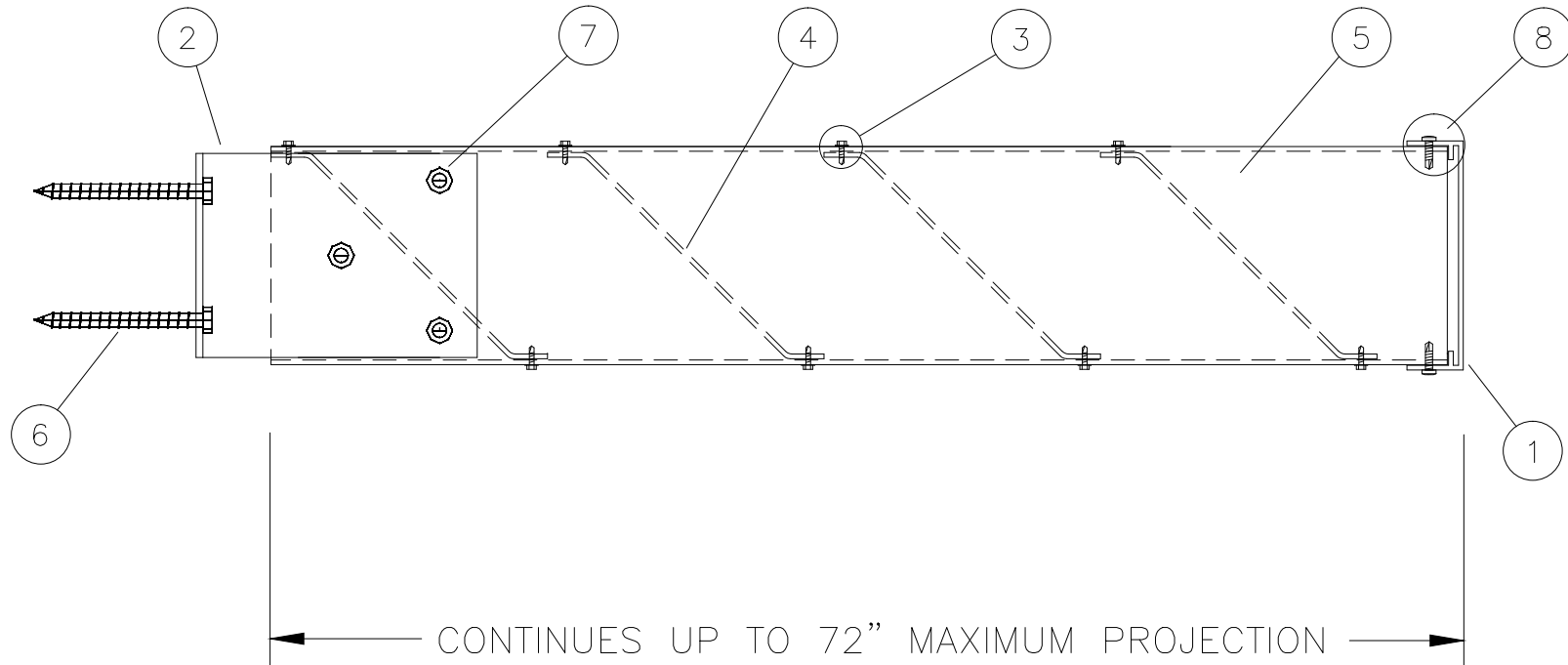


1. FASCIA: 6-1/4"x1-1/2"x1/8" ALUMINUM CHANNEL SEE DRAWING DETAIL#2
2. KNIFE PLATE: SEE DRAWING DETAIL#5
3. #10x3/4" PAN HEAD SELF TAPPING SCREWS
4. SUNSHADE BLADE: SEE DRAWING DETAIL#7
5. END JOIST: 5 13/16"x1-1/2"x1/8" ALUMINUM CHANNEL SEE DRAWING DETAIL#3
6. 1/2"x4-1/2" LAGS (4) PER KNIFE PLATE OR 1/2"x 5-1/2" (4) HILTI KWIK BOLTS
7. 3/8"x1-1/4" S.S. BOLTS W/NYLOCK HEX NUT
8. #10x1" PAN HEAD SELF TAPPING SCREWS



SIDE ELEVATION VIEW

CLIENT NAME		JOB NAME/P.O.#		APPROVED BY/ DATE:		Pre <sup>3</sup> Aluminum Sunshade System		AMERICAN STRUCTURES & DESIGN INC. 218 STEWART RD SE PACIFIC, WA 98047	
DWG#	SCALE	DATE	REV#	SALES REP. MARK	DRAWN BY J.V.	<a href="http://americanstructures.com">http://americanstructures.com</a>		PHONE	FAX #
6	N/A	1. 19. 2015					253 833-4343	253 833-4545	

Note: © This document has been developed and created by AS&D. Information contained herein cannot be used unless specifically permitted in writing by AS&D